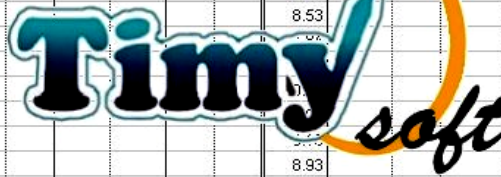


Application Software for TIMY Time Reporting Terminal

	A	B	C	D	E	F	G	H	I	J	K	L	M	N	O	P	Q	R	S	T
1	Time Sheet for SMITH John (Empl-No : 1008)																			
2																				
3	Date	Start 1	Stop 1	Start 2	Stop 2	Start 3	Stop 3	Start 4	Stop 4	Start 5	Stop 5	Hours Clocked	Absence 1	Duration	Absence 2	Duration	Correction	Duration	Net Hours	Total Week
4	01/01/2011											0.00							0.00	
5	02/01/2011											0.00							0.00	0.00
6	03/01/2011											0.00							0.00	
7	04/01/2011	08:22	12:59	14:03	17:43							8.28							8.28	
8	05/01/2011	07:30	12:31	13:20	17:03							8.72							8.72	
9	06/01/2011	08:01	13:00	13:39	17:10							8.50							8.50	
10	07/01/2011	07:30	15:31									8.02							8.02	
11	08/01/2011											0.00							0.00	
12	09/01/2011											0.00							0.00	33.51
13	10/01/2011	07:36	11:35	12:16	17:13							8.93							8.93	
14	11/01/2011	07:30	12:35	13:17	17:03							8.84							8.84	
15	12/01/2011	08:22	12:59	14:03	17:43							8.28							8.28	
16	13/01/2011	07:30	12:35	13:45	17:12							8.53							8.53	
17	14/01/2011	07:31	12:31	13:19	16:10							7.84							7.84	
18	15/01/2011											0.00							0.00	
19	16/01/2011											0.00							0.00	42.42
20	17/01/2011	08:22	12:59	13:39	17:03							8.01							8.01	
21	18/01/2011	08:03	13:01	13:50	17:00							8.13							8.13	
22	19/01/2011	07:30	12:35	13:20	17:11							8.93							8.93	
23	20/01/2011	08:22	12:59	14:03	17:43							8.28							8.28	
24	21/01/2011	07:30	12:31	13:45	17:12							8.47							8.47	
25	22/01/2011											0.00							0.00	
26	23/01/2011											0.00							0.00	41.81
27	24/01/2011	08:22	12:59	13:39	17:03							8.01							8.01	
28	25/01/2011	08:03	13:01	13:50	17:00							8.13							8.13	
29	26/01/2011	08:30	12:35	13:20	17:11							7.93							7.93	
30	27/01/2011	08:22	12:59	14:03	17:13							7.78							7.78	
31	28/01/2011	07:30	12:31	13:45	17:12							8.47							8.47	
32	29/01/2011											0.00							0.00	
33	30/01/2011											0.00							0.00	40.31
34	TOTALS											158.05							158.05	
35																				



User Manual

Manual P/N 08984-90003

Revision 03/2013 - to level v1.55



CONTENTS

Installation Overview.....	1
Verification of PC Calendar Settings	1
Excel Macro Settings for TIMY-Soft	1
Installing TIMY-Soft Files.....	4
PC Desktop shortcut.....	6
Starting and Using TIMY-Soft.....	7
Extending Calendars.....	10
Removing 'seconds' from new Time Stamps.....	11
TIMY-Soft Worksheet Descriptions.....	11
Employee Registration	12
Modify Employee	15
Delete Employee	15
Displaying Time Sheets	16
Time Sheet Contents	17
Modifying Time Sheets	17
Audit Trail after Modifying Time Sheets.....	19
Time Capping	22
Straddling Midnight.....	22
Absence and Corrections Management	24
Correction Codes	25
Hiding Columns	26
About the Time format	27
Closing a Time Sheet	27
Search for Errors	27
Print Time Sheets.....	28
Show Summary	30
Export reports	30
Compact or Delete Old Data	31
Importing Time Stamps from the USB-Key.....	32

New Records	34
Back-Up of Data	35
Terminate and Exit from TIMY-Soft	35
Technical Supplement	36
About the USB-Key	36
Format the USB-Key	36-38
Receipt of Time Stamps from a Remote location	38
Customer-Specific calculations.....	39
Examples of calculations	40-45
Time Format in Hours and Minutes.....	46
Rounding and Truncating in Excel	48
Problem Resolution	49-51
Changing the PC.....	52
Do's and Don'ts	52
Frequently Asked Questions.....	53
Index	54

Installation Overview

The TIMY-Soft application is delivered on the USB-Key shipped with the system. Install the application on the PC before inserting the USB-Key into the TIMY Time Reporting Terminal.

WARNING: THE TIME REPORTING TERMINAL DELETES ALL THE APPLICATION FILES FROM THE USB-KEY WHEN THE KEY IS INSERTED.

TIMY-Soft consists of a collection of Microsoft® Excel files. The application runs under all versions of Microsoft® Excel starting with Excel 97. It requires a PC with any of the following configurations:

- Windows® 98 SR2 with Excel 97
- Windows® XP with Excel 2000 through Excel 2010
- Windows® Vista with Excel 2007 or Excel 2010
- Windows® 7 with Excel 2007, Excel 2010 or Excel 2013
- Windows® 8 with Excel 2013

The TIMY-Soft application ***does not*** run under:

- Versions of Microsoft® Excel prior to Excel '97
- Versions of Excel running on Apple® Mac computers
- Other spreadsheet programmes such as Microsoft® Works, Apache OpenOffice™, etc.

Verification of PC Calendar Settings

Before starting with the installation procedure, check the Date and Time formats in the Control Panel of the PC (Regional Options).

1) The Date Format ***must*** be set to "dd/mm/yyyy", that is "day" with two-digits, "month" with two digits and "year" with ***four*** digits. TIMY-Soft does not function with computers set to the American date format "mm/dd/yyyy".

2) The Time Format ***must*** be set to "hh:mm:ss", with the ":" (colon) as separator.

TIMY-Soft cannot function correctly if the Date and Time settings are not correct.

Installing on a PC with Windows® 98

A USB driver must be installed before starting the installation process. This is available from the TIMY-System supplier on request.

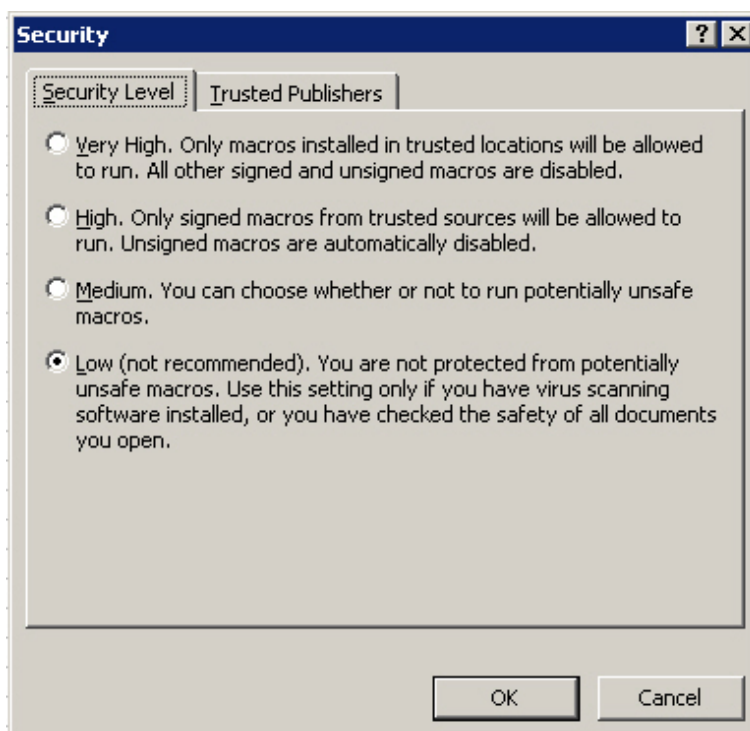
Excel Macro Settings for TIMY-Soft

Start Microsoft® Excel and ***deactivate macro protection***. Microsoft® started providing a virus protection function with Excel 97. The default settings for macro protection have become more secure with each subsequent version of Excel. Under Excel 97, there is simply a warning message and, on later versions, the default setting disables the macros sometimes without a warning message.

TIMY-Soft makes use of many macros and, before beginning the installation, the Excel macro protection must be deactivated. We guarantee that the delivered software files do not contain any viruses.

In **Excel 97**, go to "Tools > Options" and select the "General" tab. Uncheck the box marked "Activate Macro alarm" then click "OK".

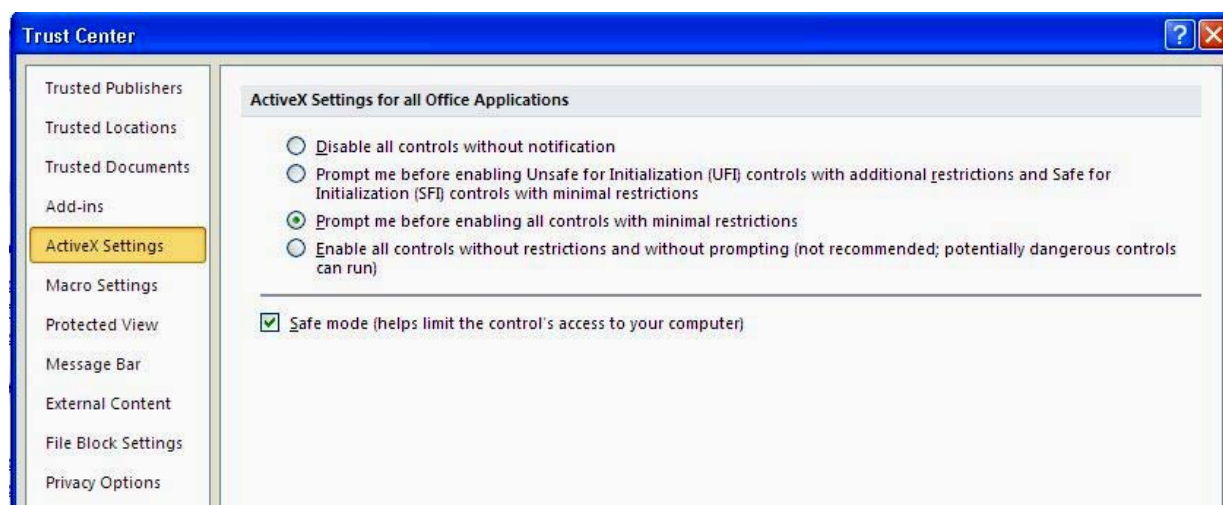
In **Excel 2000-2003**, go to "Tools > Macro" then "Security". Select the option "Security Level Low" and click on "OK".



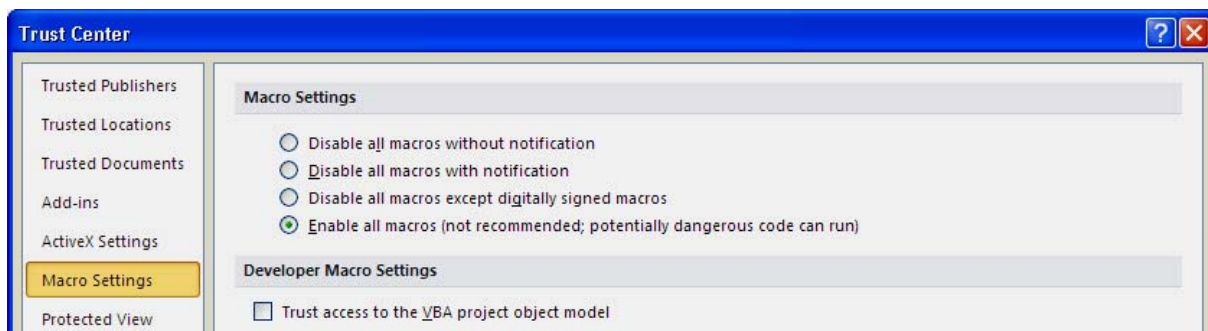
In **Excel 2007**, select the "Office" button  and in **Excel 2010** or **Excel 2013** select the "File" tab. 

Select "Excel Options" (or "Options" in Excel 2010/2013), and then choose "Trust Center".

In the right hand frame, select "Trust Center Settings" and then "ActiveX Settings". Select "Prompt me before enabling all controls with minimal restrictions" and "Safe Mode".

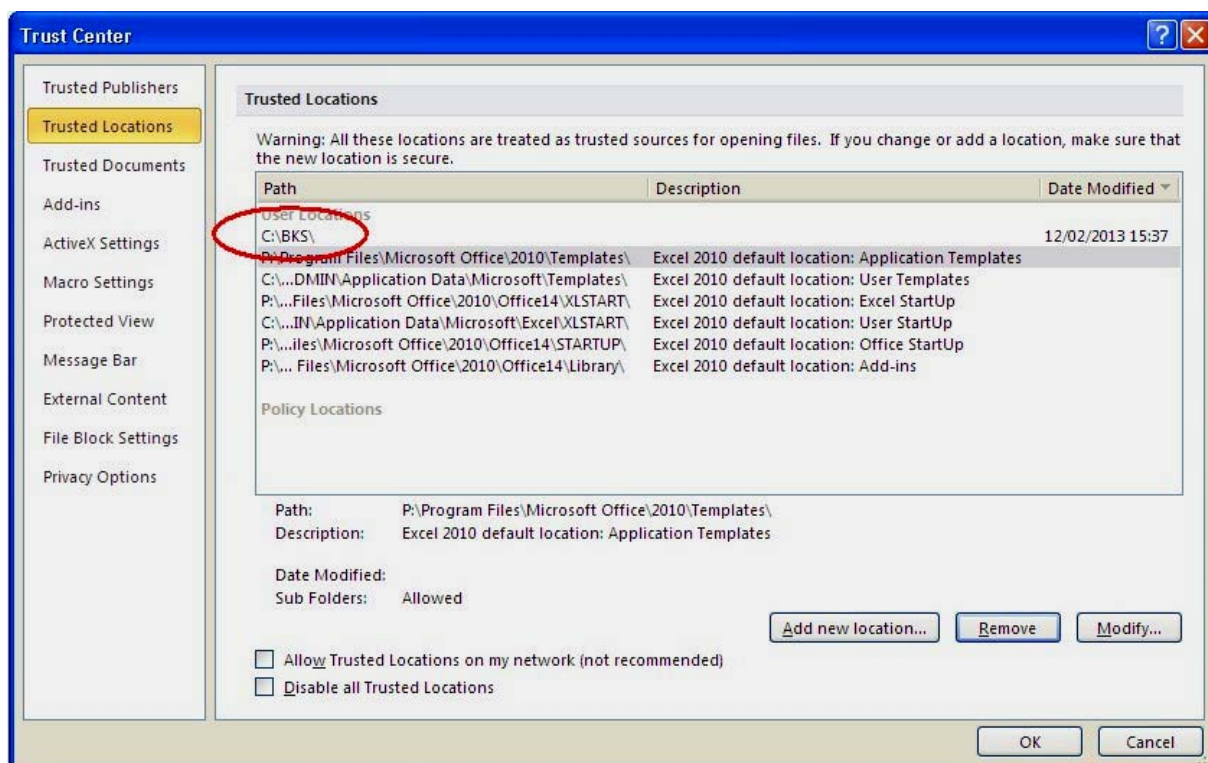


In the left frame, select "Macro Settings" and in the right frame select "Enable all macros".



In the left frame select "Trusted Locations" and in the right frame select "Add new location".

Enter name of the directory in which TIMY-Soft is installed (default is C:\BKS) and then select "OK".



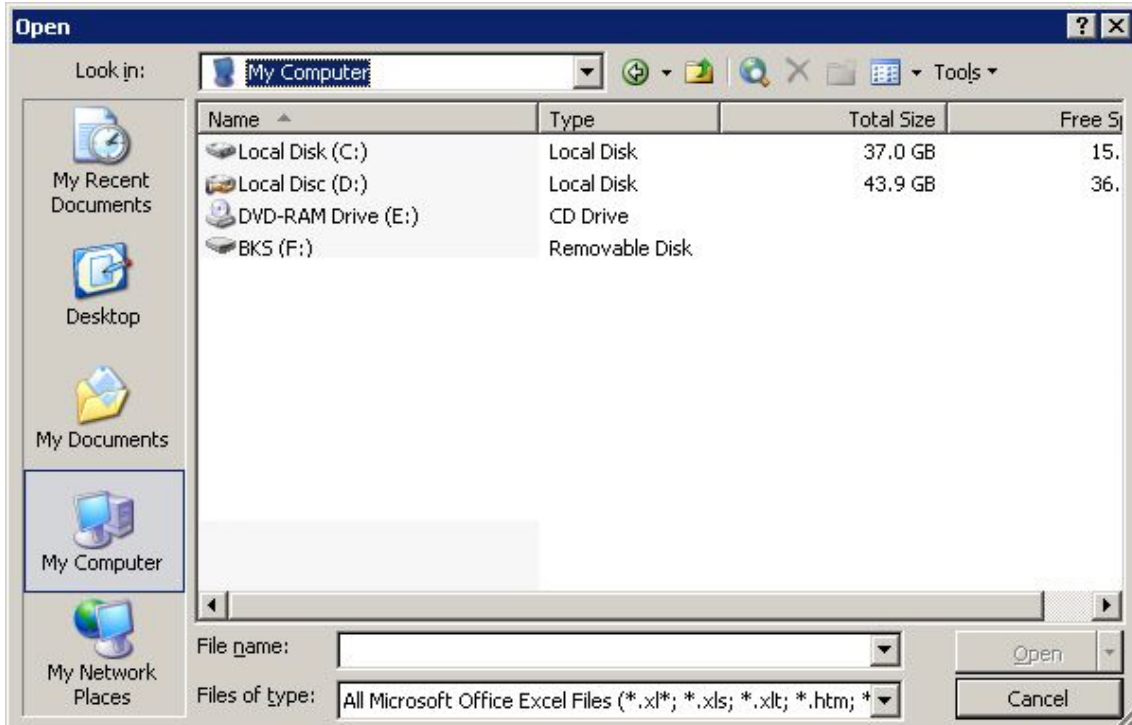
Otherwise, select "Browse" to search for the installation directory. When found, select "OK".

Select "OK" again to return to the Excel main screen.

Installing TIMY-Soft Files

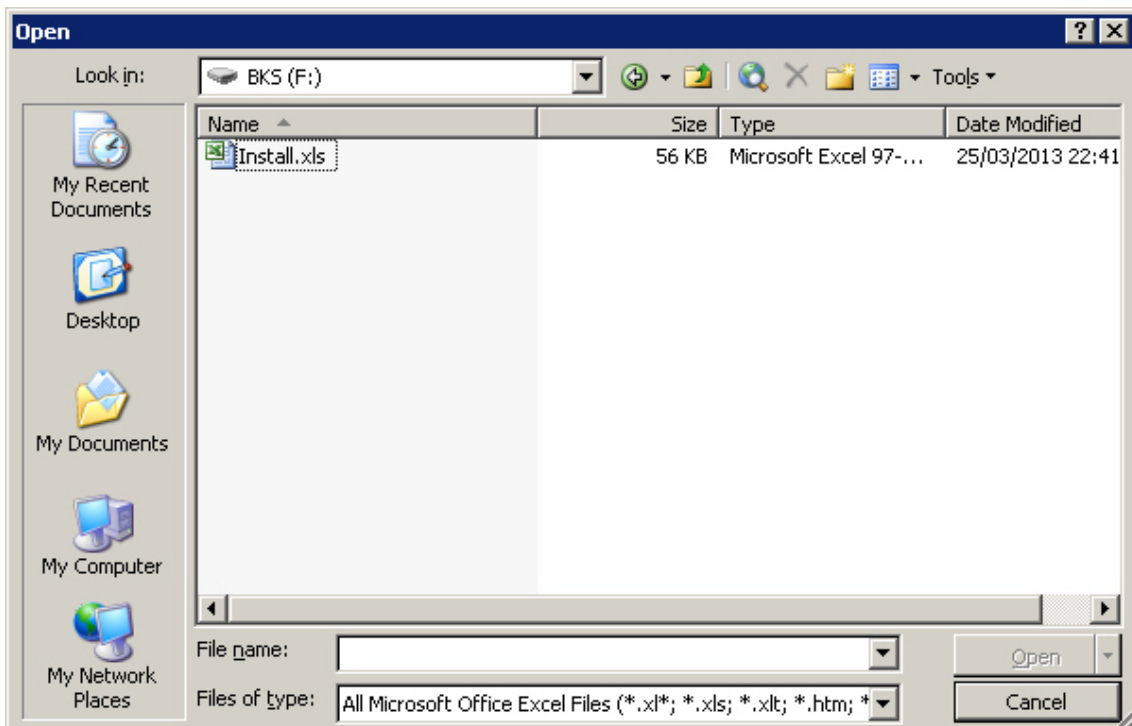
Connect the USB-Key to the PC and run Excel. With Excel open, click on "File > Open" then click on the menu list "Look in: > My Computer".

Under recent versions of Windows® the Volume Name "BKS" is displayed next to the disk icon. The drive description will display the disk letter, e.g. "BKS (F:)".

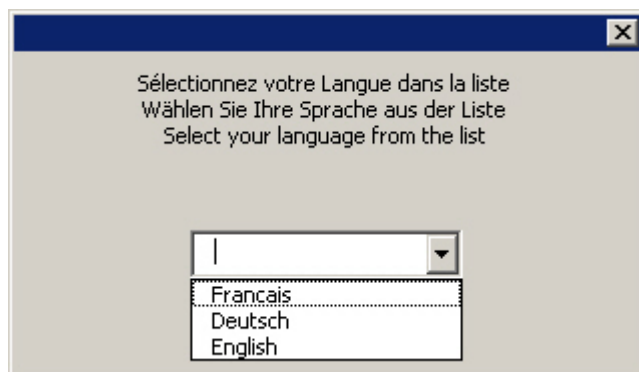


In Windows®98, the USB-Key is identified by the label "Removable Disk (F:)".

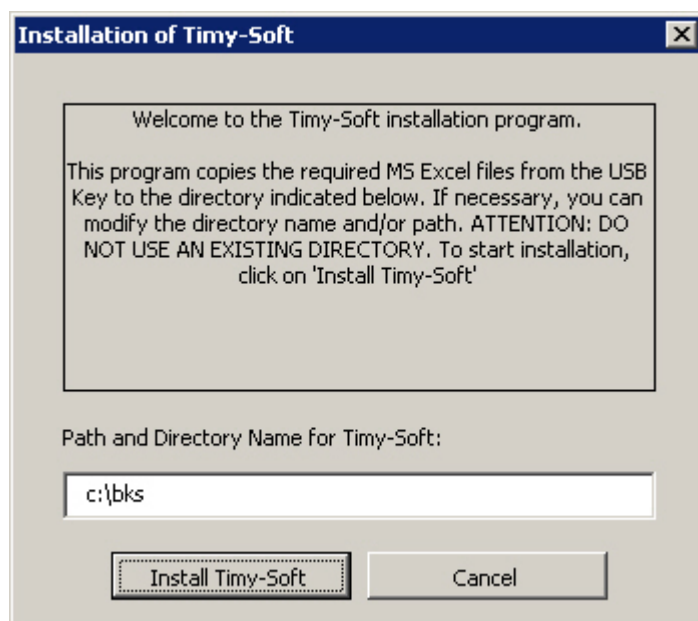
Select "BKS" or "Removable Disk", then the file named "Install.xls" and select "Open".



TIMY-Soft is a tri-lingual application.
Chose the required language:



The next menu opens if English is selected:



Only experienced users should modify the file Path and Directory Name (C:\BKs)

A new directory name can be created, but do not use an existing directory that is used for another purpose.

IMPORTANT: The complete path must be typed, including the drive letter of the disk. Do not simply enter "My Documents\TimySystem".

To continue the installation, click on "Install Timy-Soft". The installation is very fast, as only three files are copied onto the computer.

The installation programme starts TIMY-Soft immediately. The installation is now complete. If TIMY-Soft is not required at this time, close the file. To open it later, start Excel and open the file "TIMY-Soft.xls" located in the Directory in which it was created (default is C:\BKs).

Remove the USB-Key from the PC and secure it in a safe place. It is required every time data is downloaded from the TIMY Time Reporting Terminal. **The TIMY USB-Key must not be used for any other purpose.**

IMPORTANT: Avoid moving TIMY-Soft files to another directory after installation.

The directory in which the original installation was made can be renamed, but **NEVER** rename any of the files. Renaming files causes TIMY-Soft to become inoperative. TIMY-Soft cannot function with shared users on a network, but can be installed on a network server for single-user access (single-user access is a function of Excel).

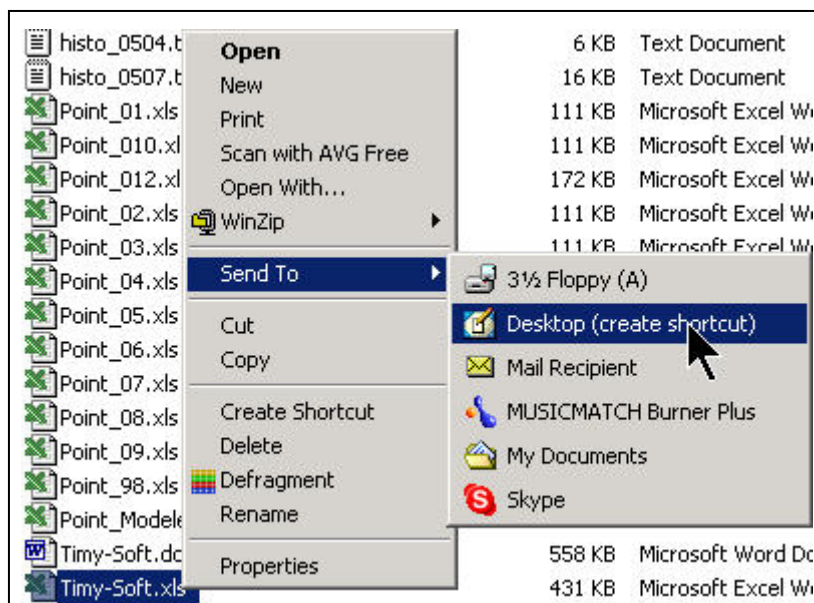
When using TIMY-Soft, never save files manually. TIMY-Soft automatically saves any changes, or data modifications, during the closing of the application files.

Never attempt to "Save as..." with another filename. All files must keep the original name.

PC Desktop shortcut

If a TIMY-Soft shortcut is required on the PC Desktop display, use Windows Explorer® via the "My Computer" Desktop icon.

Open the directory where the files were installed, select the file "TIMY-Soft.xls" with the RIGHT mouse button and then click on "Send To > Desktop (create shortcut)". **Do NOT select the file "TIMY-Soft_Code.xls"**. This is a password protected application file.



A new Excel icon called "TIMY-Soft.xls" is created on the PC Desktop display.

If a back-up copy of the basic TIMY-Soft files is required immediately after installation is completed, copy the contents of the directory where the application files were installed (default is C:\BKS) and store them in a safe place.

The user is reminded that the USB-Key installation files **are deleted** by the Time Reporting Terminal when the USB-Key is connected for the first time.

Using TIMY-Soft

Starting and Using TIMY-Soft

Start Excel, and open the file "TIMY-Soft.xls" found in the directory that was specified when the software was installed (default is C:\BKS), or double-click the desktop icon for TIMY-Soft.

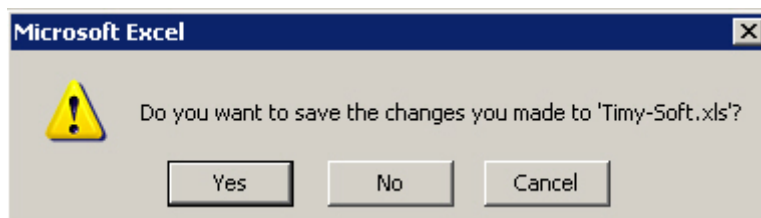
Whilst opening the TIMY-Soft Workbook, the following message on a red background appears very briefly instead of "Employee List". This is normal, and occurs every time the application is opened.

	A	B	C	D	E
1	If this message remains displayed after start-up, the macros are not activated. Please consult your manual.				
2	Family Name	First Name(s)	Empl-No	Badge-No	Start-Date
3					
4					

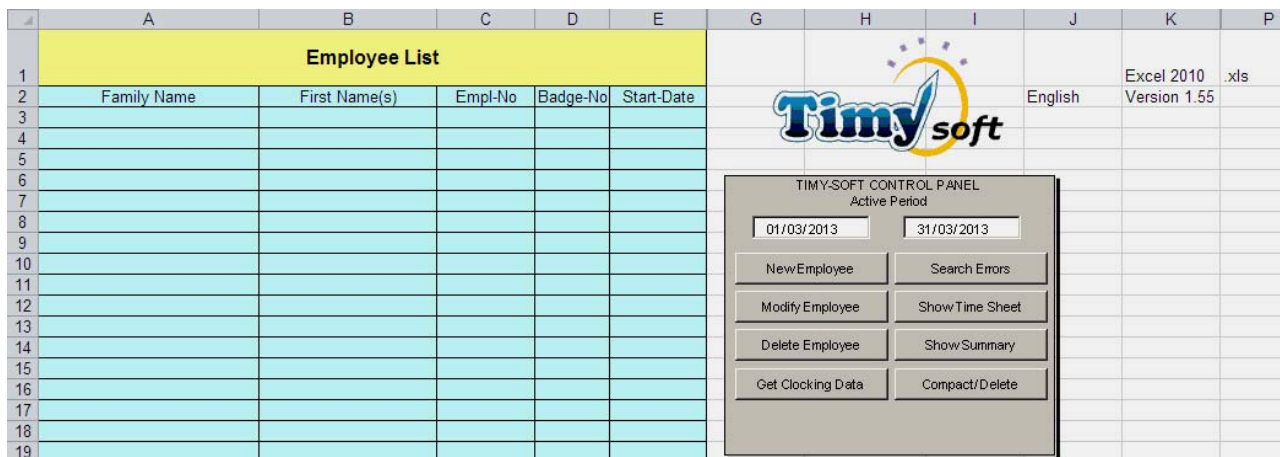
If the message remains displayed and is not replaced by "Employee List" on a yellow background ***the Excel macro protection has not been deactivated*** as required. TIMY-Soft cannot function in this mode and it is not possible to continue.

Close TIMY-Soft and set the macros as described on pages 2 and 3 of this manual, or consult the section "Problem Resolution" on page 49.

NOTE: If Excel displays a message asking if changes should be saved, select "No".



The TIMY-Soft system does not contain any data at this stage, and the empty "Employee List" worksheet is displayed.

A screenshot of the TIMY-Soft application interface. The main window shows an Excel spreadsheet with a yellow header row labeled "Employee List". The columns are labeled "Family Name", "First Name(s)", "Empl-No", "Badge-No", and "Start-Date". The rows are numbered 1 through 19. On the right side of the spreadsheet, there is a "TIMY-SOFT CONTROL PANEL" with the following fields and buttons:

- Active Period: 01/03/2013 to 31/03/2013
- Buttons: NewEmployee, Search Errors, Modify Employee, Show Time Sheet, Delete Employee, Show Summary, Get Clocking Data, Compact/Delete

The TIMY-Soft logo is visible in the top right corner of the spreadsheet area. The status bar at the bottom right shows "Excel 2010 .xls" and "Version 1.55".

Excel 2007, 2010, 2013 Applications

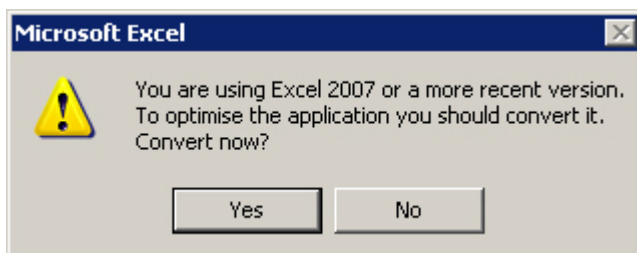
Microsoft made a complete break with all previous versions of Office. This not only affects Excel, but also Word, PowerPoint, Access, etc.

In previous Excel versions, files had the extension ".xls" but with Excel 2007, 2010 & 2013 the extension becomes ".xlsx" for a file without macros, and ".xlsm" for a file with macros.

TIMY-Soft now recognises the installed Excel version and displays this information in cell K1 of the "Employee List" worksheet, with the file format displayed in cell P1:

	J	K	P
		Excel 2010	.xls
English		Version 1.55	

When opening TIMY-Soft, the application checks the Excel version and if files are in the ".xls" format **AND** TIMY-Soft is running under Excel 2007, 2010 or 2013, a message offering to convert files to the ".xlsm" format will be displayed:



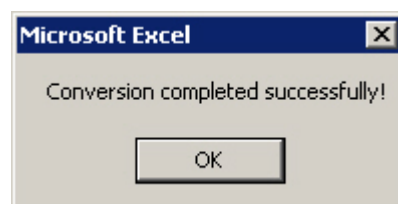
IMPORTANT: Before converting, a backup copy of the entire TIMY-Soft directory should be made, in the event that a problem occurs with the PC whilst converting. Close TIMY-Soft before creating a backup copy of the files.

If TIMY-Soft is installed on a single computer, it is recommended that the files be converted to the new format. If the conversion is not performed, this question is asked every time TIMY-Soft is started.

If TIMY-Soft is installed on a server and accessed from several PCs, of which any one is using Excel 2003 or earlier, **do not convert the application**. After the conversion, employee Time Sheets cannot be opened by Excel 2003, or earlier versions.

Only convert the format if all PCs are using Excel 2007, 2010 or 2013.

When the conversion commences, do not interrupt the process as data may become corrupted. The duration of the conversion depends on the number and size of existing files. If this is a new installation, conversion takes less than a second. When the conversion is finished the message on the right appears:



Select "OK" and observe that the format indicator in cell P1 has changed to ".xlsm".

NOTE: File conversion is reversible. See the next page for details. If reversion to ".xls" file format is performed, the TIMY-Soft application files can run with all Excel versions.

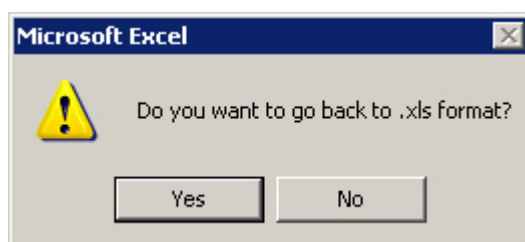
TIMY-Soft "xlsm" format reversion to "xls"

TIMY-Soft Version v1.46, and higher, running under Excel 2007, 2010 or Excel 2013 facilitates the conversion of Time Sheet files to the "xlsm" format. "xlsm" format relates to Excel files with built-in macros, and are smaller than similar "xls" files.

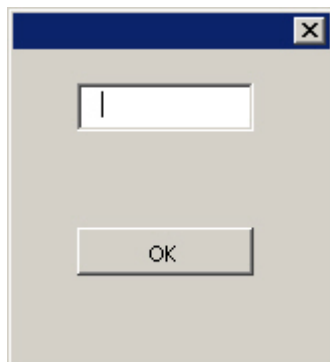
The "xlsm" format cannot be opened by Excel 2003, or earlier, versions of Excel, while "xls" format can be opened by all Excel versions.

If reversion back to the "xls" format is required, e.g. because a decision is made to use Excel 2003 instead of Excel 2010, the following procedure should be followed:

- 1) Open TIMY-Soft with Excel 2007, 2010 or Excel 2013
- 2) On the "Employee List" worksheet, select cell K2 showing the Version number.
- 3) If the Version number is 1.46 or higher, right mouse click on cell K2 and the following menu appears:



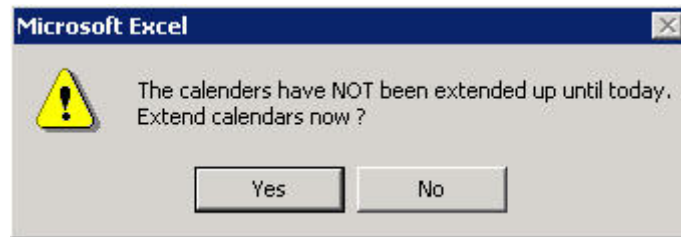
- 4) Select "Yes" to revert to the older Excel format. The cursor box at cell K2 will flash at 1-second intervals and the Status Bar at the bottom of the screen will display the name of the file under the reversion process
- 5) At the conclusion of the process or if "No" is selected, or a Version prior to v1.46 is running, the next menu opens:



- 6) Close the menu with the "X" at the top right corner, and not with "OK".
- 7) If TIMY-Soft is re-started with Excel 2007, 2010 or 2013, the centre message on page 8 will display.
- 8) If TIMY-Soft is re-started with Excel 2003 or earlier, the message on page 8 will not display.

Extending Calendars

After entering a list of employees and closing TIMY-Soft, if it is re-started on any later date the application displays the following message:



Why is the Extend Calendars message displayed?

To be able to store Time Stamps (clocking) data from the USB-Key, the employee Time Sheets must be re-initialised by writing one new line for every subsequent day since the last time "Extend Calendars" was performed, up to and including the current date of the computer.

For example, if TIMY-Soft is opened on Monday 20/02/2012, and "Yes" is selected on the message above, the application automatically extends the TIMY-Soft calendars from the last date in every Time Sheet, up to, and including, 20/02/2012.

If the application is next opened on Monday 27/02/2012 and "Yes" is selected on the "Extend Calendars" message, TIMY-Soft adds lines for the dates of 21/02/2012 to 27/02/2012 into every Time Sheet.

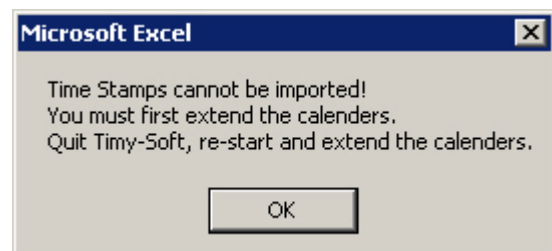
It is therefore imperative that the computer date is correct.

The "Extend Calendars" function is optional, because the process can take some time under some circumstances. For example, if there are 300 registered employees and the calendars are to be extended by 30 days the process may take several minutes. If the user only wants to review previously added Time Sheet data (e.g. during dates between payroll calculations), skip this operation by clicking on "No" and TIMY-Soft is immediately available.

If, while in this session, it is intended to retrieve new Time Stamp data from the USB-Key it is essential that the Time Sheets be re-initialised up to the current date, otherwise TIMY-Soft cannot store the Time Stamp clocking data in the employee Time Sheet files. It is therefore necessary to answer "Yes" if the intention is to "Get Clocking Data" from the USB-Key during the current session.

If TIMY-Soft is run again on the same day that the calendars have already been updated, the "Extend Calendars" message does not appear.

From TIMY-Soft version 1.49, the function of retrieving new Time Stamp data from the USB-Key is not permitted unless the calendars have first been extended. The following message is displayed in this situation:



Follow these instructions and then select "Get Clocking Data" again.

Planning Mode

The ability to write future dates into all existing Time Sheets was implemented from version 1.33 onwards. This allows for vacation and holiday breaks pre-planning.

To add future dates, cell I2 in the "Employee List" worksheet is unprotected. If a number is entered into cell I2 (e.g. 30, followed by the keyboard "Enter") TIMY-Soft can "Extend Calendars" for the selected number of days when the application is next opened.

Close TIMY-Soft, re-open it and answer "Yes" when the "Extend Calendars" message appears. TIMY-Soft checks that cell I2 content is numeric. If not, cell I2 content is erased and "Extend Calendars" is cancelled. If the content is numeric, "Extend Calendars" proceeds and all Time Sheets have additional date lines written into the files. Erase the value in cell I2 after performing the "Planning Mode" extension.

Note: Cell I2 is easily selected using the keyboard cursor keys instead of the mouse.

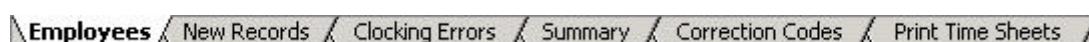
Removing 'seconds' from new Time Stamps

The TIMY Time Recorder registers ID-Badge time stamps in hours, minutes and seconds. The seconds do not appear in the employee Time Sheets for space reasons but, when a time stamp is selected, the Excel Formula Bar displays the full data including seconds. This method assures precision, but can be the cause of misunderstanding as any manual calculation for a given time period based on rounded hours and minutes may differ to the result calculated by the TIMY-Soft application.

Seconds can be forced to display "00" whenever Time Stamps are imported from the USB Key by setting cell G2 in the "Employee List" to "00" (without quotes). It is NOT possible to reset any existing time stamps that were imported previously from the USB Key.

TIMY-Soft worksheet descriptions

The TIMY-Soft workbook has six worksheets:



- **Employees:** Details of Family Name, First Name, Empl-No. (must be unique for each person), Badge-No. (unique), and Start-Date (Start-of-Clocking) are recorded here.
- **New Records:** Temporarily stores Time Stamp data coming from the USB-Key. Here, the Time Stamps are sorted by Badge Number, Date and Time before being inserted in the individual Time Sheets. Normally this sheet is always empty and would not have to be consulted unless TIMY-Soft advises that there is a problem. Time Stamps that, for various reasons, cannot be imported into the Time Sheets are saved here.
- **Clocking Errors:** Lists certain errors related to Time Stamps, such as missing Time Stamps. TIMY-Soft automatically opens this sheet after selecting the Control Panel button "**Search Errors**".
- **Summary:** Displays results when the Control Panel button "**Show Summary**" is selected. TIMY-Soft automatically opens this sheet when the "Summary" report is ready. The displayed information remains in this worksheet until the "Show Summary" button in the Control Panel is re-selected. The results of this report can also be easily exported to an external Excel file and then saved.

- **Correction Codes:** At installation, this sheet contains four standard "Absences" as examples. Additional "Correction Codes" can be added, or the standard codes can be deleted if required. Upon deletion of any code, TIMY-Soft checks to ensure that the code is no longer used in any Time Sheet. If the code is used, deletion is not possible until the code is removed, or replaced by another code in all Time Sheets.
- **Print Time Sheets:** This worksheet is used to print employee Time Sheets. Click on any cell with the RIGHT mouse button to call up a menu in which employees can be selected. TIMY-Soft copies the Time Sheets into this worksheet, with or without page breaks. Print the whole worksheet with the standard Excel "Print" command. The results of this report can be exported to an "external" Excel file and then saved.

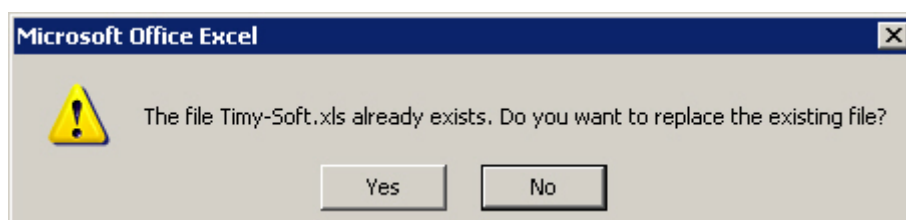
TIMY-Soft files and related worksheets are automatically protected. As a result, data cannot be entered directly into the cells of any Time Sheets, except within the columns AR-BK. Columns AR-BK can accept additional calculation formulae entered by the system user (see pages 39-46, *Customer-Specific Calculations*). The "Summary" and "Print Time Sheets" reports are unprotected worksheets, and comments can be freely entered.

Password Protection

The main "TIMY-Soft.xls" file is **not protected**. The user may want to restrict access to this file, and therefore to the entire TIMY-Soft Time Reporting System. To minimise the risk of unauthorised access a password can be assigned to the file by using the standard Excel procedure "File > Save As > Tools > General Options > Password to open" then **enter a password**. Click on "OK" and confirm with the same password in the next step and then select "Save".

NOTE: Never change the file type from ".xls" during this procedure.

Select "Yes" when advised by Excel that "TIMY-Soft.xls" already exists:



The file **must be saved with the same name** of "TIMY-Soft.xls" in the **same directory** (C:\BKS) or the directory defined at the time of initial software installation.

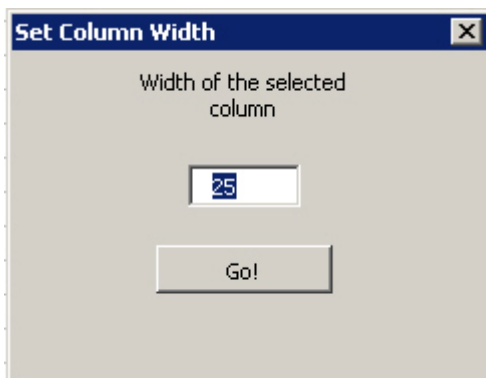
The next time that TIMY-Soft is started the password is requested.

Do not forget the password - there is no way to read the system data without it.

Employee Registration

TIP: In order to understand the operation of TIMY-Soft, it is recommended a fictitious employee is created and assigned with a start date of a few days **prior to the current date**. Time Stamp data can be created with an ID-Badge on the Time Recorder unit, and imported with the USB-Key. Any time absences in the fictitious employee Time Sheet can be viewed and the various parameter settings related to this data can be tested. When the test data is completed, delete the fictitious employee from the system.

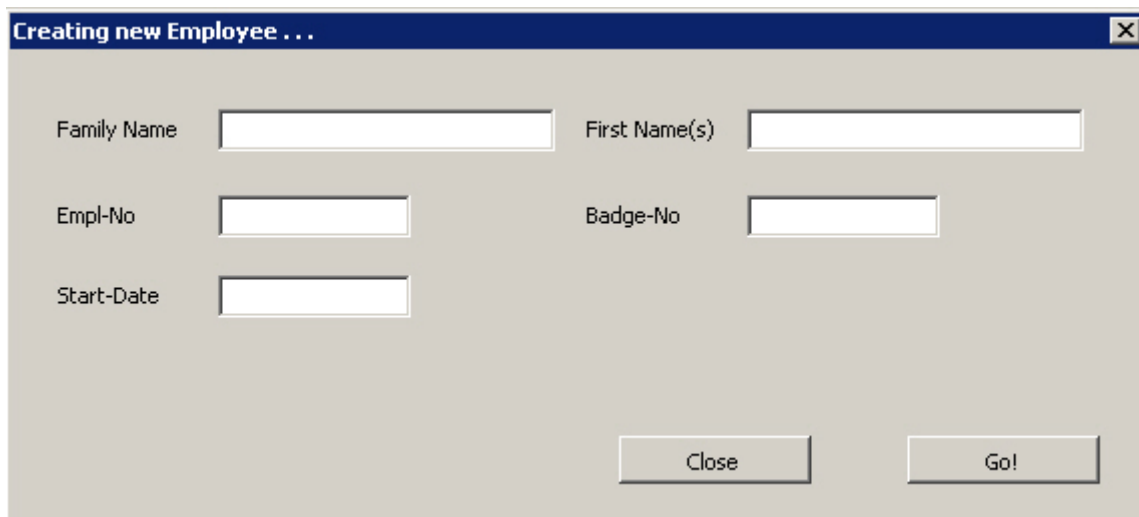
On the main "Employee List", if the widths of the columns A to E need to be changed, click on the corresponding **column title** (e.g. Family Name) with the RIGHT mouse button. The "Set Column Width" menu appears, allowing the entry of a new column width:



Enter the desired width (in pixels) and click on "Go!"

Close the Set Column Width menu by clicking on the "X" in the upper right-hand corner.

To register a new employee, click on the Control Panel button "New Employee". The "Creating new Employee" menu opens, ready for employee registration:



- **Family Name** and **First Name(s)**: These are "free text" fields and any character can be used. It is recommended that the Family Name be capitalised.

- **Empl-No**: TIMY-Soft needs a unique "key" to identify each employee, which is the Employee Number. During the creation of an Employee Number, TIMY-Soft verifies that it has not been assigned to another employee.

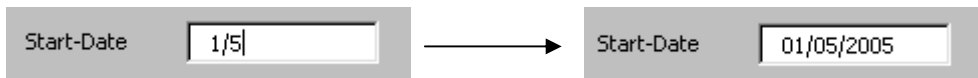
If a unique Employee Number is already used for payslips, or other employee documents, it is recommended that the same number be used in TIMY-Soft. This allows easy reconciliation of TIMY-Soft data with the other employee documents.

The use of the Employee Number as a "key" (instead of the ID-Badge number) allows assignation of a new ID-Badge in the event of loss of an ID-Badge. This negates the need to obtain an ID-Badge with the same number as the lost ID-Badge. Employee Time Sheet records are based on the Employee Number "key" and not on ID-Badge number.

- **Badge-No:** TIMY-Soft checks to ensure that this number has not been assigned to another employee. **CAUTION!** TIMY ID-Badges use figures and letters. Do not confuse the number "0" (zero) and the capital letter "O", or number "1" with capital letter "I".

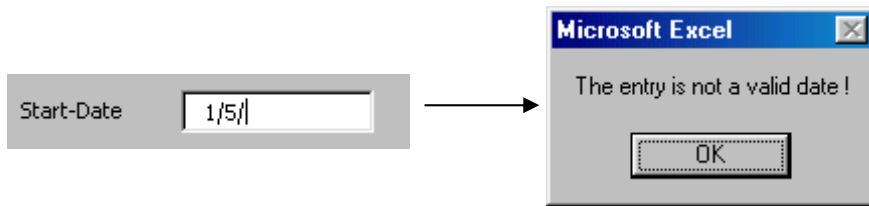
- **Start-Date:** Clocking data created before this date can *never* be displayed by TIMY-Soft, and this date *cannot* be modified later. It is possible to enter an earlier date or a future date relative to the current date. A confirmation is required if a date is entered more than ± 30 days from the current date. The calendar for the employee is automatically generated by TIMY-Soft, and a "Time Sheet" file is created commencing with this Start-Date.

As with ALL dates in TIMY-Soft, enter the day and the month with the correct separator (e.g. "1/5" for the 1st of May if the Windows date separator is set to "/"). As soon the computer "Enter" key is pressed, the date is set to the complete format (e.g. "01/05/2005"):



When entering dates in this fashion, Excel always uses the current year, so be careful during December and January. During January 2013, if the value "27/12" is entered Excel turns that into "27/12/2013" and not "27/12/2012".

If the year is not entered do not use the separator after the month, otherwise an error message appears:



When the details are completed, select "Go!" to create the employee Time Sheet and, in the case of a retroactive starting date, the initialisation of the calendar includes any earlier dates. As soon as the "Creating new Employee" menu is blank, start with another employee registration. To leave the menu, click on "Close". The "Employee List" is automatically sorted by family name when the "Creating new Employee" menu is closed.

An example of the data entry for a new employee is shown below:

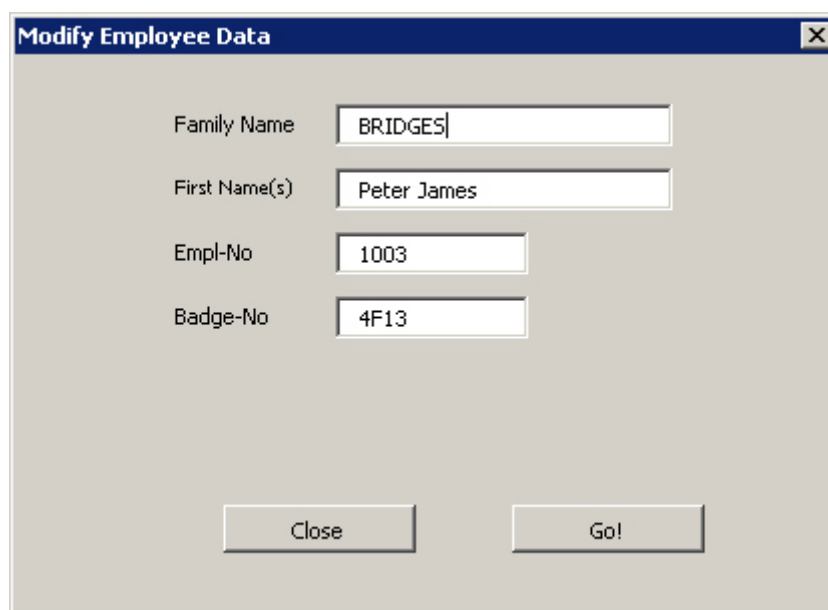
A screenshot of a Windows dialog box titled 'Creating new Employee ...'. The dialog box contains several input fields arranged in two columns. The first column has 'Family Name' with the value 'BRIDGES', 'Empl-No' with the value '1003', and 'Start-Date' with the value '01/01/2012'. The second column has 'First Name(s)' with the value 'Peter James' and 'Badge-No' with the value '4F13'. At the bottom of the dialog box, there are two buttons: 'Close' on the left and 'Go!' on the right.

TIP: If TIMY-Soft is managing a large number of employees, it is possible to have the "Employee List" sorted by work department. The "Employee List" can be sorted by preceding the Family Name with a code to signify the department. For instance, "ADM-JONES" if Jones works in the Administrative department and "PRD-SMITH" if Smith works in Production.

TIMY-Soft sorts on the complete content of the Family Name field, so all the employees with "ADM-" appears before those with "PRD-". Within each department group, employees are sorted by Family Name. Use "Modify Employee" to add the code in front of the Family Name.

Modify Employee

Select an employee from the list of names in the "Employees List" main menu and click on the Control Panel button "Modify Employee". The menu opens to allow changes in the Family Name, First Name, Empl-No and Badge-No.



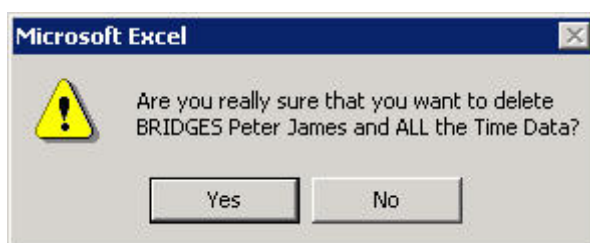
The screenshot shows a dialog box titled "Modify Employee Data" with a close button (X) in the top right corner. It contains four text input fields:

- Family Name: BRIDGES
- First Name(s): Peter James
- Empl-No: 1003
- Badge-No: 4F13

At the bottom of the dialog box, there are two buttons: "Close" and "Go!".

Delete Employee

To delete an employee entirely, on the "Employee List" main menu chose the employee and in the Control Panel click on the button "Delete Employee". A confirmation is required, as this operation is **irreversible** once completed.



WARNING: It is NOT possible to recover any data for a deleted employee!

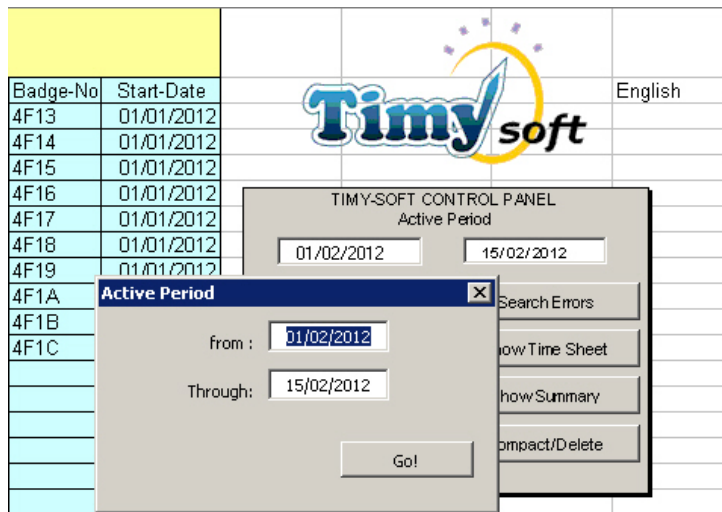
Displaying Time Sheets

A Time Sheet (an Excel workbook file) is automatically created whenever an employee is registered (see pages 12-14, *Employee Registration*).

Before displaying a Time Sheet, the range of dates to be displayed must be selected for the calendar period required under "**Active Period**" in the Control Panel. Select the date range required by clicking on one of the date panels.

The date range is saved by TIMY-Soft until it is changed again - it does not have to be changed each time the application is started. The date range is also used for three functions launched from the buttons located on the *right side* of the Control Panel. These are "Search Errors", "Show Time Sheet" and "Show Summary".

To change the dates, click on either of the two date panels and the "Active Period" menu opens:



In the "Employee List", select the employee Family Name row to be viewed and then click on the Control Panel button "Show Time Sheet".

The employee Time Sheet is displayed for the date range specified under "Active Period":

	B	C	D	E	F	G	H	I	J	K	L	M	N	O	P	Q	R	S	T	AQ
5	Time Sheet for BRIDGES Peter (Empl-No : 1003)																			
6																				
7	Date	Start 1	Stop 1	Start 2	Stop 2	Start 3	Stop 3	Start 4	Stop 4	Start 5	Stop 5	Hours Clocke	Absence 1	Duration	Absence 2	Duration	Correction	Duration	Net Hours	Total Week
39	01/02/2012											0.00	VAC	8.00					8.00	
40	02/02/2012											0.00	VAC	8.00					8.00	
41	03/02/2012											0.00					UNP	8.00	0.00	
42	04/02/2012											0.00							0.00	
43	05/02/2012											0.00							0.00	32.82
44	06/02/2012	08:30	18:01									9.52							9.52	
45	07/02/2012	08:15	16:03									7.80							7.80	
46	08/02/2012	07:40	17:03									9.38							9.38	
47	09/02/2012	08:19	18:01									9.69							9.69	
48	10/02/2012	07:55	15:13									7.31							7.31	
49	11/02/2012											0.00							0.00	
50	12/02/2012											0.00							0.00	43.70
51	13/02/2012											0.00							0.00	
52	14/02/2012	08:15	16:01									7.77							7.77	
53	15/02/2012	07:30	17:13									9.73							9.73	
434	TOTALS											61.20							77.20	
435	TOTALS-A	VAC	16.0	UNP	8.0															

Time Sheet Contents

- 1) Dates in column B: a light blue background identifies weekends.
- 2) Up to 10 Time Stamps per day for each employee (corresponding to five work periods) can be managed by TIMY-Soft. All Time Stamps imported from the USB-Key are placed in chronological order in the Time Sheet in cells "Start 1" to "Stop 5" (columns C to L).

The Time Stamps for any given day are re-sorted every time a new Time Stamp is added. This feature ensures that in larger applications with several Terminals and several USB-Keys, with employees clocking in and out at different terminals, the Time Stamps are still sorted correctly in chronological order, even if a "Start" time is imported *after* a related "Stop" time.

- 3) "Hours Clocked" in column M calculates the total number of hours recorded in a the day, based on the Time Stamps made by the employee when "Clocking", without taking account of any underlying time models. "Hours Clocked" is the sum of the times between each pair of "Start/Stop" times, i.e. (Stop 1 - Start 1) + (Stop 2 - Start 2) + (Stop 3 - Start 3), etc.
- 4) Absence and Duration are manually recorded in columns N to Q, the hours of which are added, or deducted, from the "Hours Clocked" (full details are discussed on page 23).

The values of columns O and Q (Absence/Durations) are added to, or deducted from, "Hours Clocked" with the result showing in "Net Hours" (column T).

Duration in column S does not deduct or add time because any Correction in column R is used to record unpaid time-off and does not have any effect on the "Net Hours".

- 5) Every Sunday the sum of the preceding 7 days (including Sunday) is automatically displayed in column AQ "Total Week".
- 6) At the bottom of the worksheet, TIMY-Soft calculates the totals for "Hours Clocked" and "Net Hours" for the Active Period selected, as well as the sums for any Absences occurring in the same Active Period.

Modifying Time Sheets

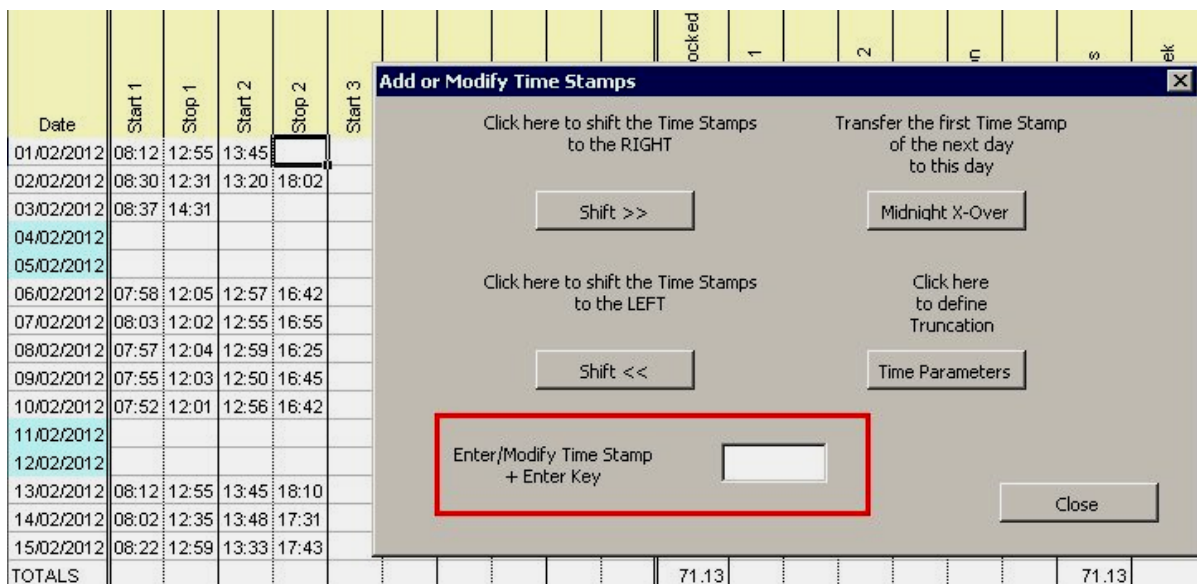
NOTE: Time Sheet data cannot be directly modified on the Excel worksheet, but it can be modified in several ways, described below:

Time Stamps Manual Entry

It is likely that an employee occasionally forgets to Clock-in or Clock-out, especially in the early days of using the TIMY-System.

Correction is very simple. Open the employee's Time Sheet and with the **RIGHT** mouse button select the **first blank cell** of the day concerned (e.g. to the right of 13:45 in the example):

The "Add or Modify Time Stamps" menu opens:



Enter the missing time in the "Enter/Modify Time Stamp" field at the bottom of the menu and press "Enter" on the computer keyboard to validate the data. Only use the colon (:) symbol to separate hours and minutes (or whichever symbol is defined in the Regional Time and Language Settings for the computer).

To delete an entry move the cursor to the entry to be removed and use the computer keyboard "Delete" key to erase the entry in the "Enter/Modify Time Stamp" box. Then press "Enter" on the keyboard.

TIMY-Soft sorts the Time Stamp data automatically and put them in chronological order. Any manually added or modified Time Stamp data is displayed in **bold** to show that it did not occur because of an employee ID-Badge swipe. In addition, on the date cell in column "B", an Audit Trail is created, with a comment showing the Date and Time that the modification occurred.

Date	Start 1	Stop 1	Start 2	Stop 2	Start 3	Stop 3	Start 4	Stop 4	Start 5	Stop 5	Hours Clocked	Absence 1	Duration	Absence 2	Duration	Correction	Duration	Net Hours	Total Week
01/02/2012	08:12	12:55	13:45	18:00							8.96							8.96	

The next cell on the right is automatically selected to allow the addition, or modification, of another Time Stamp without needing to use the mouse or cursor key.

If the "Add or Modify Time Stamps" menu obstructs the view of the Time Sheet, it is possible to move the menu by **clicking and holding** the blue title bar with the **LEFT** mouse button and then dragging the menu. Release the mouse button when satisfied with the position of the menu.

The "Add or Modify Time Stamps" menu remains on the screen to allow other corrections quickly. It is possible to move within the "Time Sheet" screen with the computer keyboard Cursor Keys without leaving the "Add or Modify Time Stamps" menu. A whole day (or more) of Time Stamps can be modified in the event of forgetfulness or loss of an ID-Badge.

TIP: to skip to the first cell of the next day, press the "Next Page" or "PgDn" Key on the computer keyboard. To return to the first cell of the previous day use "Previous Page" or "PgUp". These keys are usually located near the Cursor Keys.

Audit Trail after Modifying Time Sheets

Whenever a time stamp is modified, added or deleted from a Time Sheet by the TIMY-Soft user, a comment is automatically added to the date cell on which the change has occurred, indicated by the Excel "comment tag".

Date	Start 1	Stop 1	Start 2	Stop 2	Start 3	Stop 3	Start 4	Stop 4	Start 5	Stop 5	Hours Clocke	Absence 1
01/02/2012	08:12	12:55	13:45	18:00							8.96	
02/02/2012	08:30	12:31	13:20	18:02							8.71	
03/02/2012	08:37	14:31										
04/02/2012												
05/02/2012												
06/02/2012	07:58	12:05	12:5									
07/02/2012	08:03	12:02	12:5									
08/02/2012	07:57	12:04	12:5									
09/02/2012	07:55	12:03	12:5	16:45							8.01	

[empty] replaced by: 18:00 on: 25/02/2012 13:50:46

Moving the mouse cursor to the date cell will allow the comment to be displayed.

Time Calculations using Time Models

In certain cases, the measurement of total time between Time Stamps may not be required, but only the attendance time within certain time ranges. For example, if the time clocked before 08:00, or after 16:30 should not be counted. This could also apply to the midday break. A fixed lunch break between 12:00 and 13:00 can be set by stopping the count of time at 12:00 (even if the employee clocks out *after* 12:00) and re-start counting at 13:00 (even if the employee clocks in *before* 13:00). TIMY-Soft uses a simple implementation of daily "Time Models" to truncate the time to a fixed schedule, even though the employee is "present at work".

In the example below, before setting time model parameters, the total time counted for the 11/04/2005 is 7.87 hours (7 hours and 52 minutes).

20	11/04/2005	07:58	12:05	12:57	16:42	7.87						7.87
21	12/04/2005	08:03	12:02	12:55	16:55	7.98						7.98
22	13/04/2005	07:57	12:04	12:59	16:25	7.55						7.55
23	14/04/2005	07:55	12:03	12:50	16:45	8.05						8.05
24	15/04/2005	07:52	12:01	12:56	16:42	7.92						7.92

Let us say that any time clocked *before* 08:00, or any time clocked *after* 16:30, should not be calculated. I.e. The employee should not be "compensated" for a late arrival in the morning by a late departure in the afternoon. Simply click on one of the Time Stamp cells with the RIGHT mouse button to open the "Add or Modify Time Stamps" menu, and then select "Time Parameters".

Midnight Hours Automatic correction

If there are employees who are regularly present at midnight, it is possible to automate the "Midnight X-Over" action. Do this by entering a limit time in cell "B6" on individual Time Sheets (this cell is not protected):

	B	C	D	E	F	G	H	I
5	Time Sheet for BRIDGES Peter James							
6	07:30							

This allows TIMY-Soft to transfer any newly imported Time Stamps made before this time to the previous day, when the Time Stamps are imported from the USB Key, **if the number of Time Stamps on the previous day is odd, and the time difference between the last Time Stamp on the previous day and the Time Stamp to be transferred is less than 10 hours.**

Allow sufficient buffer time in the value of cell B6 in case of late "clock-out" due to overtime requirements. If, for example, the time is set as 07:30, but the employee "clocks-out" at 08:30, the automatic "Midnight X-Over" cannot occur and a manual "Midnight X-Over" must be performed

The automatic "Midnight X-Over" action cannot be retro-actively applied to Time Stamps that already exist in any Time Sheets. It is only applied to Time Stamps when they are imported from the data file on the USB-Key or "New Records".

Absence and Corrections Management

TIMY-Soft can be used to manage employees' absences, and to add (or subtract) manual corrections in the employee's Time Sheet. ALL corrections are entered in hours and decimal parts of hours, and **not in days.**

Absences entered in columns N-O (Absence1) and P-Q (Absence2) are added to the "Net Hours", i.e. they are considered to be equivalent to a physical presence. Data entered in columns R-S (Correction) remain neutral and have no impact on the "Net Hours". Columns R-S are used to document unpaid time off.

To explain the operation of these corrections, see the following example:

7	Date	Start 1	Stop 1	Start 2	Stop 2	Absence 1	Duration	Absence 2	Duration	Correction	Duration	Net Hours	HOURS PAID
27	22/12/2003	07:27	12:07			SIC	2.50					7.00	7.00
28	23/12/2003			13:57	16:37	SIC	4.50					7.00	7.00
29	24/12/2003	07:22	12:03	13:54	16:37							7.00	7.00
30	25/12/2003					HOL	7.00					7.00	7.00
31	26/12/2003	07:23	12:01									4.63	4.63
32	27/12/2003	00:00	04:03									4.05	
33	28/12/2003											0.00	
34	29/12/2003	08:02	12:03	12:49	16:29							7.68	
35	30/12/2003	07:45	12:01	13:15	16:15							7.27	
36	31/12/2003	07:45	12:01									4.27	
585	TOTALS											55.90	

For the date 22/12/2003: The employee only "Clocked-in" in the morning, and our "Time Model" rules truncated the time before 07:30 and after 12:00, to record only 4.5 hours of "presence". The employee, who was unwell in the afternoon, was granted 2.5 hours Sick Leave (corresponding to the time that the employee would have normally worked during the afternoon). As the column Absence 1 is "compensated time" this is added to Clocked Hours ("Net Hours"). The total time counted for the day is 7.0 hours.

For the date 23/12/2003: The employee only "clocked-in" in the afternoon because of sickness in the morning. The two Time Stamps in this case originally filled the first two boxes (TIMY-Soft does not have any way of knowing that the two first Time Stamps of the day do NOT belong in columns "Start 1" and "Stop 1"). We manually shifted them into the second columns ("Start 2" and "Stop 2") with the modification function "Shift >>" so that the "Time Model" rules are correctly applied. The employee thus carried out 2.5 hours of activity this day, and we added a 4.5 hours "compensated time" for the same reason as the day before.

For the date 25/12/2003: The employee did not "clock-in" because it is a paid holiday. 7 hours of "HOL" are applied.

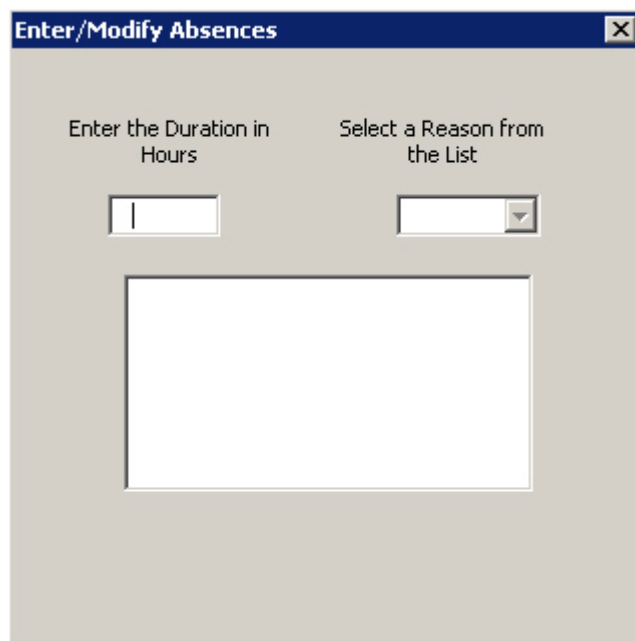
To enter an Absence or Correction, click in the Absence (or Correction) column N, P or R with the RIGHT mouse button. A menu appears allowing the entry of a Duration (in Hours and decimals of an hour) and "Select a Reason from the List":

In "Enter the Duration in Hours", type the value required in decimal format, followed by the "Enter" key on the PC keyboard.

The cursor automatically moves on to the "Select a Reason" box. Click on the drop-down list to select a code (or the first letter of the reason code).

After a code is chosen, use the "Enter" key to validate the entry.

The correction is applied and the next line in the worksheet is automatically selected.



Correction Codes

The list of Reasons is maintained in the "**Correction Codes**" worksheet tab. Reasons can be added or deleted as required. It is suggested that Codes are limited to 3 characters in order to fully display them in the Time Sheet columns.

TIMY-Soft remembers the values previously entered in the menu. Thus, if several days require the same absence entry (e.g. a week of paid holiday) it is sufficient to press "Enter" + "Enter" for each day.

[The opportunity to copy the same settings to all employee Time Sheets is possible with this menu. If this is not required, close the menu with the X at the top right corner.]

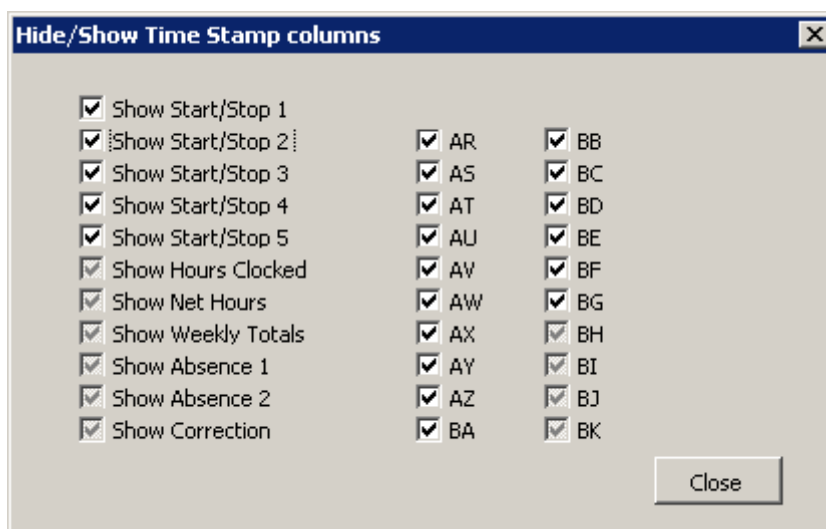
It's possible to also navigate within the Absence columns by using the Cursor Keys, just like when handling the Time Stamp columns. If two weeks of paid holiday need to be entered, when Saturday of the first week is reached, press twice on the keyboard "Down Cursor" key to position the cursor over Monday of the following week, then continue with "Enter" + "Enter" several more times. This way it's possible to add 2 weeks of paid holidays in a few seconds.

TIMY-Soft copies the cell values into the menu only when using the "Cursor Up" key. When the "Down Cursor" key is used, whatever values were last stored in the menu remains. Thus, it's possible to copy a value of an earlier cell and re-use it in a lower cell. To quickly cancel an already entered value, go up to the first line where the cells are empty, then descend again to the cell to be cancelled, and press "Enter" + "Enter".

It is possible to directly select a value to be erased by clicking on the "Absence" cell with the RIGHT mouse button. In the menu, delete the "Duration" value, and press the keyboard "Enter" key, then delete the "Reason" and press the keyboard "Enter" key.

Hiding Columns

By default, TIMY-Soft shows all 10 columns of Time Stamp data (Start 1 to Stop 5) and various Totals. If, in the business environment, the employees never "Clock" more than 4 times a day, the worksheet columns G-L (Start 3 to Stop 5) can be hidden to make the Time Sheet more compact. With the RIGHT mouse button, click in one of the cells in the column titles e.g. cell G7. The "Hide/ShowTime Stamp Columns" menu appears:



It's possible to hide the columns of any Time Stamps that do not need to be displayed. The user can hide the daily Hours Clocked or Net Hours if, for example, another "Total" formula is desired in the free columns (AR to BK). It's possible to revert at any time to the "Hide/ShowTime Stamp Columns" menu to show a previously hidden column.



This parameter setting relates only to the viewing of the sheet - it does not have any effect on Time Stamp management. For example, if only four Time Stamps are set to be visible (Start 1 - Stop 1 and Start 2 - Stop 2) and an employee actually "clocked" six times (two more than anticipated) the Time Stamp entries "Start 3" and "Stop 3" are always in the employee Time Sheet. The Totals are always correctly calculated, but the additional Time Stamps cannot be displayed until "Start 3 - Stop 3" are "unhidden" using the method above.


About the Time format

The Time Stamps are shown in hours and minutes. However, time periods or durations are always shown in hours, tenths and hundredths. In Excel it is very difficult to perform calculations on durations in hours and minutes format (e.g. it is not possible to display a negative duration in hours and minutes) and users should be familiarised with the representation of the time in the form of hours and decimals (15 minutes = 0.25 hours; 30 minutes = 0.5 hours; 45 minutes = 0.75 hours, etc) when Time Sheets are shown.

If the totals must be represented in hours and minutes format, refer to the section **Time format in Hours and Minutes** on Page 44.

Closing a Time Sheet

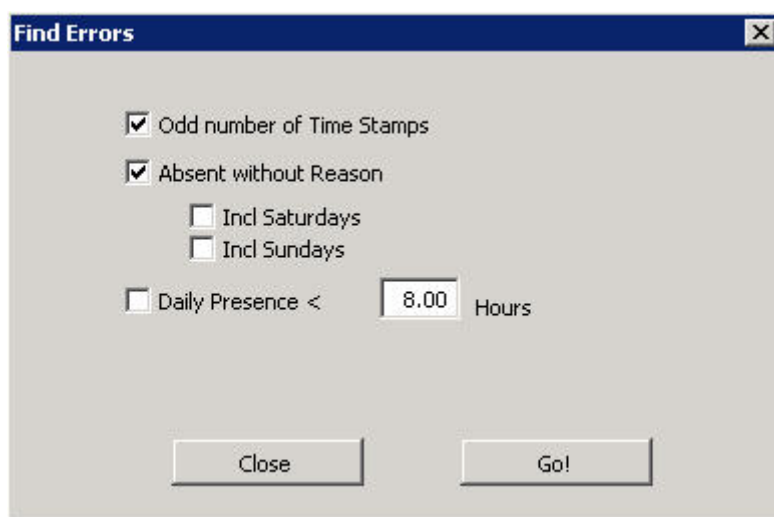
To close a Time Sheet, click on the  in the control box on the top right of the open worksheet page (**NOT** the Excel  at the extreme top right) or use the Excel command "File > Close". Alternatively, Alt + F4 also closes an open file. When a Time Sheet is closed correctly with these methods TIMY-Soft saves any changes automatically without any further action and the user is returned to the "Employee List" main menu.

Never click on the diskette icon  to save information. TIMY-Soft saves files automatically, and in the correct format when they are closed.

Search for Errors

To quickly identify any errors, such as omitted Time Stamps, or days with "Absent without Reason", TIMY-Soft can search all errors for all employees for any time period selected in the Control Panel "Active Period".

First, ensure that the correct date range is selected, then click on the Control Panel button "Search Errors". The "Find Errors" menu opens:



- **Odd number of Time Stamps:** When checked, the search includes days when employees "Clock-in" but did not "Clock-out", or vice versa. Excel cannot calculate a daily total for days with incomplete Time Stamp pairs, and so it is necessary to manually add a Time Stamp in such circumstances.

- **Absent without Reason:** When checked, TIMY-Soft includes all days for which there were no Time Stamps at all and no Absence or Correction entered. By default, TIMY-Soft tests only the normal working days of the week. If employees work on weekends, include Saturdays and Sundays in the search.

- **Daily Presence** < (less than): If employees must be present for a minimum number of hours each day, a search can be initiated for days where this minimum is *not achieved*.

NOTE: Even if the Daily Presence function has not been selected, a duration (e.g. 8.0) in the "Hours" field must be present. TIMY-Soft checks the format validity of this field.

When the required selections have been made, click on "Go!"

TIMY-Soft carries out the search and reports the result in the "Clocking Errors" worksheet

	A	B	C	D
1	Family Name	First Name	Date	Error type
2	BARNES	Alice	26/12/2003	Absent without reason
3	BRIDGES	Peter	18/12/2003	Absent without reason
4	BRIDGES	Peter	26/12/2003	Absent without reason
5	CLEMENT	Mary	25/12/2003	Absent without reason
6	MARTINS	Sandra	16/12/2003	Absent without reason
7	MARTINS	Sandra	25/12/2003	Absent without reason
8	MARTINS	Sandra	26/12/2003	Absent without reason
9	MORRIS	Sophia	25/12/2003	Absent without reason
10	MORRIS	Sophia	26/12/2003	Absent without reason
11	PARKES	Alan	19/12/2003	Absent without reason
12	PARKES	Alan	25/12/2003	Absent without reason
13	PARKES	Alan	26/12/2003	Absent without reason
14	PLEASANCE	Agnes	26/12/2003	Absent without reason
15	REEVES	Peter	25/12/2003	Absent without reason
16	REEVES	Peter	26/12/2003	Absent without reason
17	SMITH	John	25/12/2003	Absent without reason
18	SMITH	John	26/12/2003	Absent without reason
19	VALENTINE	Louis	25/12/2003	Absent without reason
20	VALENTINE	Louis	26/12/2003	Absent without reason

In order to **correct an error** in this list, RIGHT mouse click on a cell in the "Error Type", (column D). TIMY-Soft opens the employee's Time Sheet at the chosen line and a correction can be performed immediately. Corrected errors are not immediately removed from the "Clocking Errors" report, and do not appear when "Search Errors" is run again.

When all errors are corrected, return to the "Employee List" main menu and re-run the "Search Errors" again. If the errors were corrected, the "Clocking Errors" report is now empty.

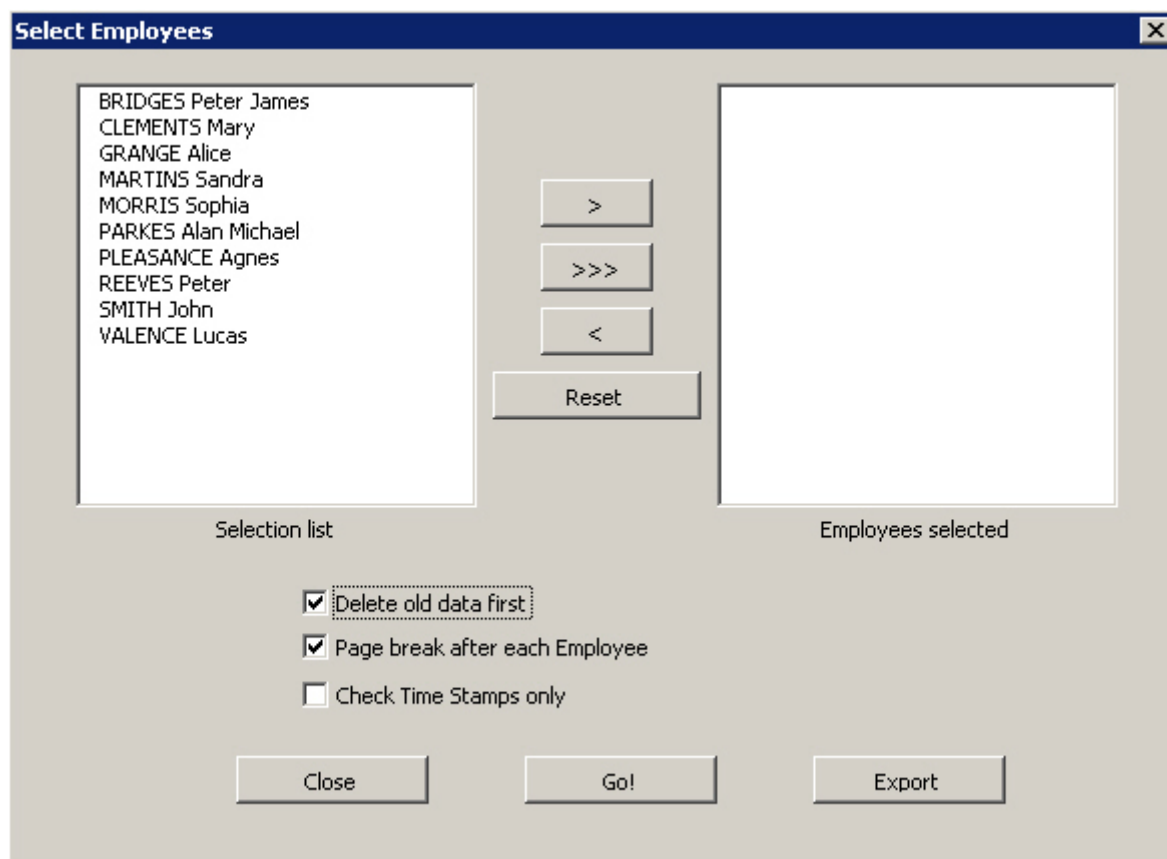
Print Time Sheets

For the dates chosen in the "Active Period", any Time Sheet is printed individually by calling up each one with "Show Time Sheet" and using the standard Excel printing function to print part or all of the Time Sheet.

However, this is time-consuming if there are more than a few employees to be viewed.

The fastest and most convenient way is to use the built in "Print Time Sheet" function described on the next page.

Click on the worksheet tab "Print Time Sheets", and then click in any cell on the sheet with the RIGHT mouse button to call up the "Select Employees" Menu:



In the "Selection list" panel highlight the employees for which Time Sheets need to be printed and then click on the ">" button to transfer them to the "Employees selected" panel on the right.

All employees can be transferred to the right hand panel by using ">>>".

To transfer multiple random employees, hold down the "Ctrl" key on the computer keyboard while selecting on the required names with the mouse. To select a consecutive list of names, click on the first name, hold the "Shift" key and select the last name.

To cancel the selection and start over, click on "Reset".

When all selections are complete, click on "Go!". TIMY-Soft makes copies of the Time Sheets for all the employees selected and copy them into this worksheet, complete with page breaks (if chosen). The entire contents of the report can now be printed with the standard Excel print function, or exported to an external Excel file.

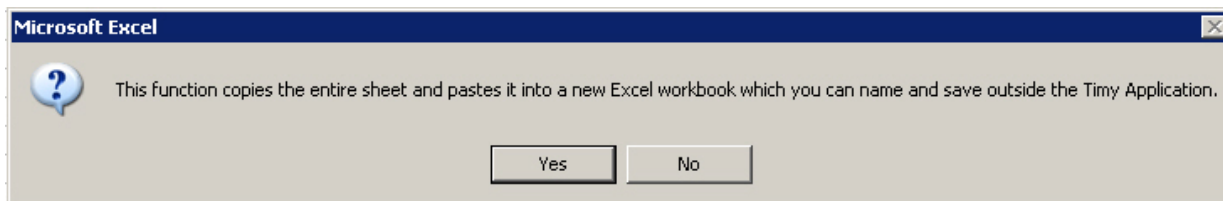
NOTE: The data remains in this worksheet until replaced by new data.

It is good practice to erase this report when finished with by clicking in any cell on the sheet with the RIGHT mouse button to call up the "Select Employees" Menu. Simply selecting "Go!" clears the screen.

This action will result in a smaller Timy-Soft.xls file when the system is closed, which enhances the system speed the next time it is opened.

Export Print Time Sheets report

After a "Print Time Sheets" report is created, right click again on the display, select the "Export" function at the bottom right in the "Select Employees" screen. Select "Yes" in the next message and a new Excel file is created, as Book 2 or Book 3, etc:



Use the Excel "Save As" function to rename the file appropriately. Return to TIMY-Soft by clicking on the "Timy-Soft" tab in the Windows Toolbar.

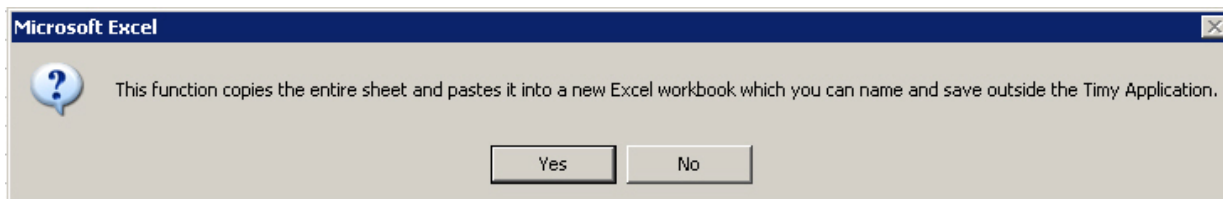
Show Summary

For help in the preparation of payroll slips, TIMY-Soft can create a "Summary" report comprising of one line for each employee showing the number of "Time Clocked" hours, the number of "Time Calculated" hours (including compensated Absences) as well as totals for all Absence Reasons:

	A	B	C	D	E	F	G	H	I
1	Summary	Period:							
2	01/02/2012	15/02/2012							
3	Family Name	First Name(s)	Empl.No	Time Clocked	Time Calculated	VAC	SIC	UNP	HOL
4	BRIDGES	Peter James	1003	79.88	86.13		6.25		
5	CLEMENTS	Mary	1009	83.08	99.08	16.00			
6	GRANGE	Alice	1010	89.19	89.19				
7	MARTINS	Sandra	1005	91.20	91.20				
8	MORRIS	Sophia	1007	89.76	97.76				8.00
9	PARKES	Alan Michael	1002	110.12	110.12				
10	PLEASANCE	Agnes	1001	90.32	90.32				
11	REEVES	Peter	1004	101.28	101.28			8.00	
12	SMITH	John	1008	90.99	90.99				
13	VALENCE	Lucas	1006	98.61	98.61				
14	TOTALS			924.42	954.67	16.00	6.25	8.00	8.00

Export Summary report

After a "Summary" report is created, right click again any cell on line 3, e.g. Family Name. Select "Yes" in the next message and a new Excel file is created, as Book 2 or Book 3, etc:



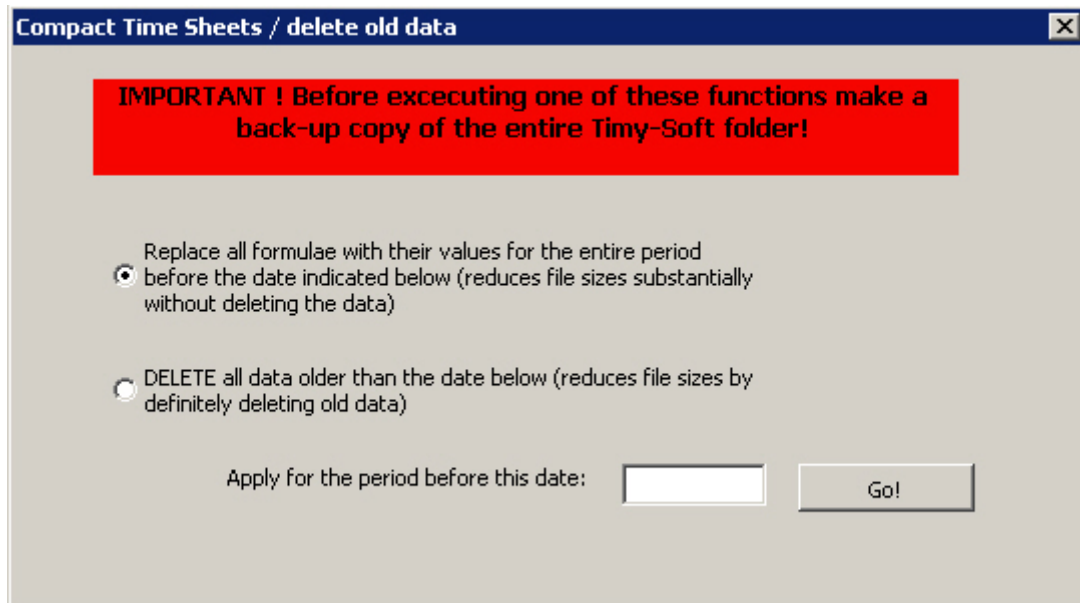
Use the Excel "Save As" function to rename the file appropriately. Return to TIMY-Soft by clicking on the "Timy-Soft" tab in the Windows Toolbar.

Compact or Delete Old Data

From time to time it is useful to delete older data, if the Time Stamp history is not required to be kept electronically beyond a minimum legal period. Select the "Compact/Delete" function on the Control Panel:



"Compact/Delete" allows two different functions, shown below:



"Replace all formulae ..." is selected by default. This removes all formulae in all the Time Sheets and replaces them by their calculated values.

"Delete all data older than the date below" removes historical data. This totally deletes all time stamps data and any related calculations prior to the date entered.

Replace all formulae

If TIMY-Soft was implemented in 2009, there are several years of history and each time sheet is probably over 1.0Mb. The user could reduce the file size by deleting calendar dates, but does not know if there will be future reasons to consult this older information.

Using the "Replace" function, for example by entering 01/01/2012 as the stop date and click "Go!" reduces file sizes. The system replaces all the formulas with their numerical values from the installation date up to, and including, 31/12/2011.

There is no apparent difference in the time sheets when using "Show Time Sheet" but there are significant differences within the structure of the cells.

On a time sheet file that has not been compacted, a cell in column M ("Hours Clocked") displays something like "= SUM((C14-D14)*24,(F14-E14)*24,(H14-G14)*24,(J14-I14)*24,(L14-K14)*24)" in the Excel "Formula Bar". The value displayed in the cell might be 7.20, for example.

When this time sheet file is compacted, the value 7.20 is displayed in the Excel "Formula Bar" instead of the formula. The numerical value uses less characters than the formula, hence the benefit in performing the "Replace all formulae" operation.

NOTE: Changes cannot be made to any data that is compacted.

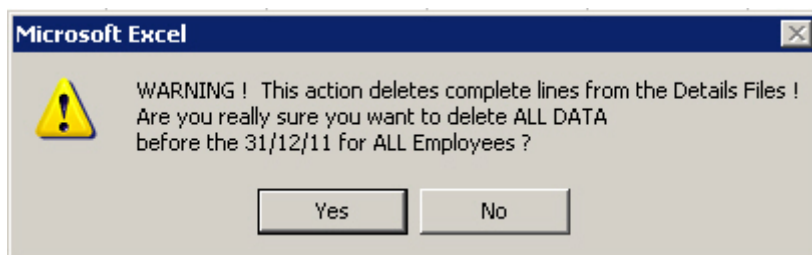
When using "free" columns in timesheets (columns AR-BK) with the functions of the optional "Forms" software module, compaction can have a second use.

Many of these functions use the cells in rows 5 and 6 for setting parameters. If it is desired to change the settings from a certain date, it is not possible because all history prior to that date is also changed, as settings in lines 5 and 6 apply to the entire column. This situation is particularly difficult when setting up counters such as cumulative daily or weekly differences.

With this new compaction feature, the entire history can be "frozen" until the day preceding the effective date of the change. Any changes can be made from the effective date (whether in cells format or outright replacement of a function by another), knowing that the history can never change.

Delete Calendars

This function is identical to the previous method and totally removes the history before the specified date. "Deletion" is irreversible and it is imperative to backup the TIMY-Soft files prior to this action and to understand the meaning of "Delete old Data ...".



A confirmation is required. If "Yes" is selected, all the data BEFORE the chosen date is deleted. In the example above, data after and including 31/12/2011 is retained.

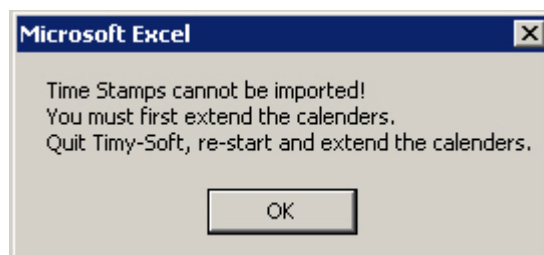
WARNING! This operation is irreversible. Do not make a mistake!

Importing Time Stamps from the USB-Key

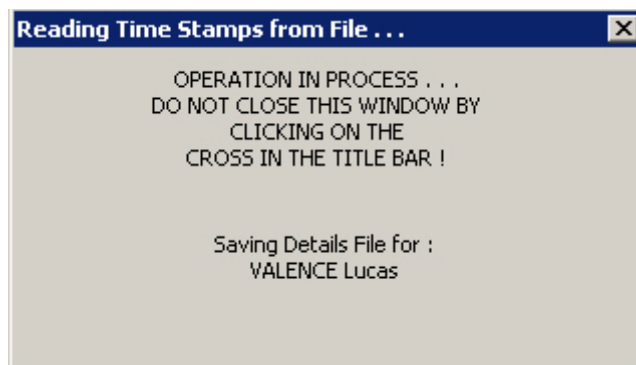
After copying the Time Stamps from the TIMY Terminal onto the USB Key, insert the Key into the PC, and click on the Control Panel button "Get Clocking Data".

From software version v.149, TIMY-Soft prevents the importation of Time Stamps from the USB Key if the Calendars were not extended when the application was opened. If this is the case, the message on the right appears:

Follow the instructions, and then select the Control Panel button "Get Clocking Data".



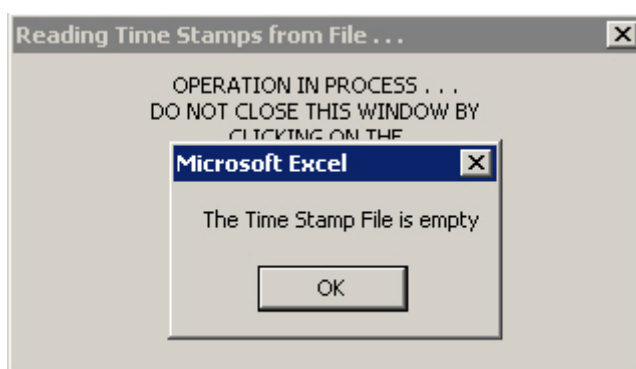
TIMY-Soft now transfers the Clocking Data of each employee into the appropriate employee time sheet file. A message displaying the progress is displayed for each employee:



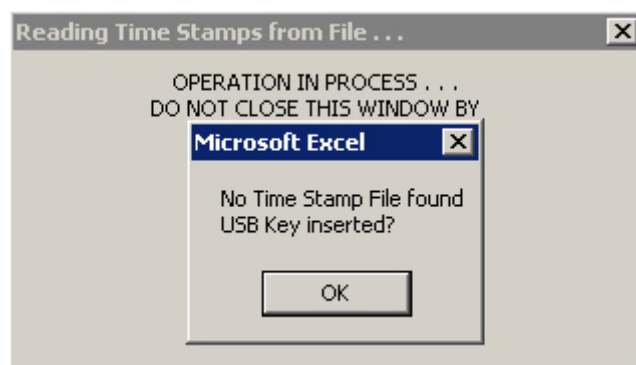
Depending on the number of employees and the number of "Time Stamps" to be transferred and the computer speed, this operation can take between a few seconds to several minutes.

When the transfer from the USB-Key is finished, TIMY-Soft automatically erases the contents of the Time Stamp file on the USB-Key, making it ready to use again.

If a second attempt to repeat the transfer operation of Time Stamp data is made (where the USB-Key file is now empty) TIMY-Soft displays:

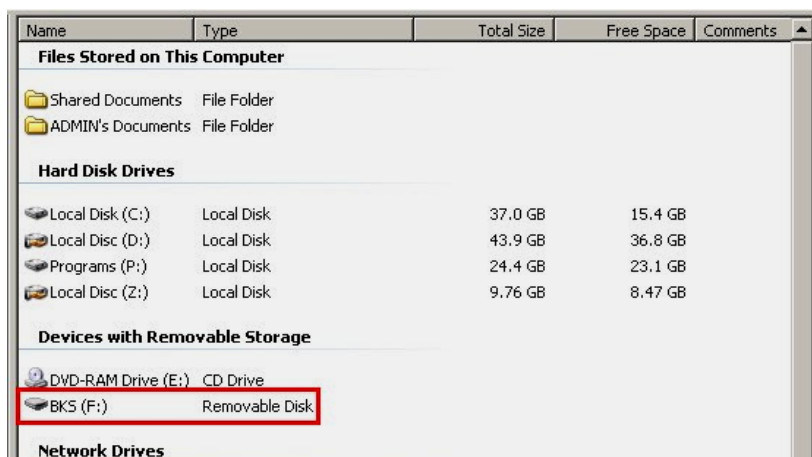


If TIMY-Soft does **NOT** find a Time Stamp file on the USB-Key the following appears:



Check that the USB-Key is connected correctly and that Windows® has recognised it by selecting "My Computer" on the PC Desktop display and reviewing the disks found by the operating system. Verify that a removable disk with the label "BKS" is present.

The drive letter "F:" may not be the same as shown below:



New Records

This worksheet is used for temporarily storing Time Stamps while they are imported from the UB-Key during the "Get Clocking Data" routine. The "New Records" tab disappears from view whilst the data is imported.

If TIMY-Soft cannot place Time Stamps into a Time Sheet they are saved in the "New Records" worksheet, and the reasons are:

1. "Date non-existent in Time Stamp File": a date line for a Time Stamp does not exist in the employee Time Sheet. Example: TIMY-Soft has an Employee registered with the "Start-Date" 03/05/2013 but a Time Stamp exists for an earlier date.

Solution: Delete the Employee using the Control Panel button 'Delete Employee'. Re-register the Employee with 'New Employee' ensuring that the 'Start-Date' is the same date as (or earlier than) the first Time Stamp listed in the 'New Records' tab. Disconnect the TIMY USB-Key, and select 'Get Clocking Data' in the Control Panel. The Time Stamps will now be imported from 'New Records'.

2. "More than 10 Time Stamps": an employee has "Clocked-in" or "Clocked-out" more than 10 times in one day.

Solution: Modify the employee Time Sheet to reflect the last Time Stamp shown in this list in order to capture the complete work presence.

3. "Time Stamp already exists": an identical time stamp, measured to 1 second, has already been saved in the Employee time sheet. This is due to identical data being re-imported, possibly as a result of a "BKS_FILE.TXT" file from a remote site being used a second time, or a copy of "BKS_FILE.TXT" existing in the Timy-Soft directory.

Solution: The time stamps are redundant and should be cleared by using the 'Delete all' button at the top of the worksheet. **NOTE:** Ensure that any valid Time Stamps are imported by using 'Get Clocking Data' as all records are deleted from 'New records' with the 'Delete all' function. Delete the file BKS_FILE.TXT from the Timy-Soft directory.

4. "Unknown Badge Number": the ID-Badge number for a Time Stamp cannot be found in the "Employee List", or the Employee is not registered in the "Employee List", or "0" (zero) may have been entered instead of letter "O" during data entry, or "1" may have been entered as letter "I" during data entry.

Solutions: (a) Modify the employee ID-Badge number, or (b) Register the missing employee, or (c) Close and re-open TIMY-Soft and select "Yes" to 'Extend calendars'.

With each new selection of "Get Clocking Data" TIMY-Soft attempts to load Time Stamps that are saved in the "New Records" worksheet.

SPECIAL NOTE: If the "New Records" worksheet has a large number of errors, the TIMY-Soft.xls application file grows and the operation speed can be impaired, particularly when importing Time Stamps from the USB-Key. The "New Records" worksheet must be periodically checked and the errors removed using the "Delete All" button on the "New Records" worksheet. **All records in the worksheet are deleted with this function.**

Back-Up of Data

During the transfer of Time Stamps from the USB-Key to the computer, TIMY-Soft also performs an automatic copy of the clocking data into a file in the directory in which TIMY-Soft is installed. These files are named "histo_yymm.txt" where "yymm" refers to the year and the month of the transfer from the USB-Key to the PC.

NOTE: This does not necessarily mean the month that the Time Stamps were made - it means the **date of the transfer action**. If Time Stamps of September 2012 are transferred on 01 October 2012, they are saved in the file "histo_1210.txt" and **not** in the file "histo_1209.txt".


The "histo_yymm.txt" files offer an added level of data security and permits the rebuild of the Time Stamp data if a major catastrophe were to occur with the Excel files or the computer. These files must be included a the regular "TIMY-Soft" Backup routine.

TIMY-Soft does not have a built-in function for automatically backing-up the application files after the system is closed.

In order to protect TIMY-Soft data files, users are advised to make regular Backup copies of the Directory in which TIMY-Soft was installed, preferably onto a media different than the computer hard disk (e.g.ZIP-Disk, CD-ROM, or USB Memory) but **NOT** the TIMY USB-Key.

Backup & Restore routines within MS-Windows® Operating Systems are also available for creating archive copies of files.

Terminate and Exit from TIMY-Soft

To leave the application, close the "TIMY-Soft" Workbook by clicking on the  in the top right of the Excel window, perform the Excel "File > Close" commands or use Alt+F4.

APPLICATION SOFTWARE TECHNICAL SUPPLEMENT

About the USB-Key

Precautions are taken to prevent unauthorised individuals from using any commercially available USB-Key to remove Time Stamp data from the Time Reporting Terminals.

The Time Stamp data is stored on the USB-Key in a text file named "BKS_FILE.TXT". This file is pre-installed on the USB-Key before delivery to customers. NEVER MODIFY the name of this file, NOR REMOVE it from the Key. If the content of the USB-Key is tampered with in any way, or if an unauthorised USB-Key is used, the Time Reporting Terminal rejects the Key with an error message (e.g. "Er65") and Time Stamps cannot be transferred to the USB-Key.

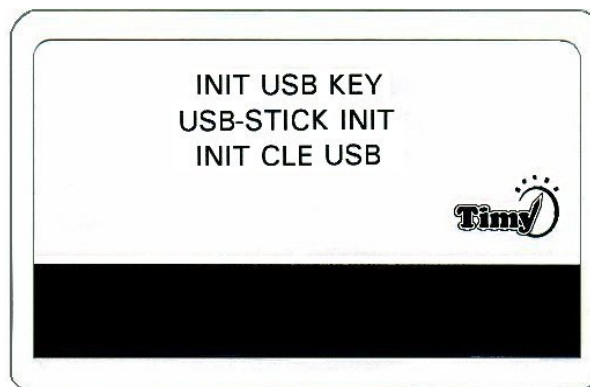
If ever the TIMY USB-Key becomes unusable due to error messages, or a commercially available USB-Key is obtained to use with the TIMY-Soft application, follow these procedures to initialise the USB-Key.

Format the USB-Key on Time Recorders

Time Recorders from **serial number 05N6** onwards have an embedded routine to re-initialise the TIMY USB-Key. The routine is encoded into the Time Recorder firmware and requires the use of the TIMY Management Badge "INIT USB KEY", provided with the TIMY-System.

NOTE: Initialising a USB Key with the TIMY terminal DELETES ALL FILES stored on the key, and REDUCES THE MEMORY CAPACITY TO 128 MB, independent of the actual memory capacity of the key. If a key is purchased with 8GB capacity and is initialised with the TIMY terminal, the key capacity is reduced to 128MB. There is NO WAY to cancel this operation to recover the full capacity.

To prevent unintentional loss of Time Stamp data on the USB-Key, if the terminal detects there is a Time Stamp file (BKS_FILE.TXT) containing data, the initialisation process is terminated. If a Time Stamp file exists but is empty, the initialisation process continues.



NOTE: Re-initialisation with the Time Recorder unit can only be performed with the "INIT USB KEY" badge on units from serial numbers 05N6, and onwards

INIT USB KEY Procedure

On the TIMY Time Recorder unit press the red button and swipe the "INIT USB KEY" badge. The display indicates **In it** and the TIMY unit is ready to re-initialise the USB-Key.



Within 5 seconds, connect the TIMY USB-Key. The message **Usb i** is displayed for about 5-6 seconds.



Do not remove the USB-Key until the message changes to **End**. If time stamps are ready for download, leave the USB-Key connected and press the red button.



Error conditions that may occur during initialisation

Er03 May occur after swiping the initialisation badge. The Time Recorder is an earlier version that cannot be used to initialise the USB-Key. Use the PC procedure described in the next section to format the USB-Key on the PC.

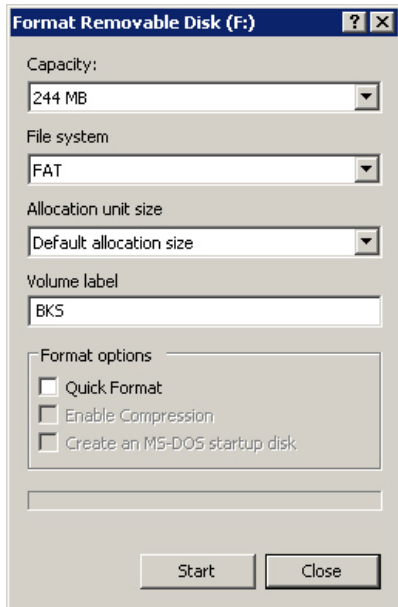
Er81 There is a time stamp file (BKS_FILE.TXT) containing data on the key, and the initialisation is cancelled. Empty the file first by transferring the USB-Key data into the TIMY-Soft application with "Get Clocking Data".

Format the USB-Key on the PC

If ever the TIMY USB-Key becomes unusable due to error messages, or a commercially available USB-Key is obtained to use with the TIMY-Soft application, follow these procedures to initialise the USB-Key.

NOTE: USB-Keys must have 2GB nominal storage capacity, or less, when formatting on the PC. Larger capacity keys cannot be formatted with this method on a PC for use with the TIMY-System.

1) On the PC desktop display select "My Computer" and click on the icon corresponding to the USB-Key with the right mouse button, then select "Format ..."



- **DO NOT MODIFY** the "Capacity" field
- **Select "FAT"** as File system
(**NOT "FAT32"**, which is the default)
- **Allocation unit size** cannot be changed
- **Enter "BKS"** as Volume Label (in CAPITAL LETTERS)
- **DO NOT SELECT "Quick Format"**
- **Click on "Start"** and confirm "OK" in the next message

2) Start "MS-Notepad", normally found under "Programs > Accessories", and create an empty file named "BKS_FILE.TXT" (all in CAPITAL LETTERS) in any directory on the PC's hard disc. Remember the location, close MS-Notepad and copy the file just created onto the USB-Key.

VERY IMPORTANT: Do not save the "BKS_FILE.TXT" file directly from Notepad onto the USB-Key. It must first be stored on the PC and then copied to the USB-Key.

Receipt of Time Stamps from a remote location

If a remote work site is operated where a TIMY Terminal is installed, it may be time consuming or inconvenient to receive the physical USB-Key from the site.

A copy of the Time Stamp File ("BKS_FILE.TXT") on the USB-Key can be sent by e-mail. Alternatively, copy the file to another USB memory key and mail it to the location where the TIMY-Soft Time Reporting Application is operated.

IMPORTANT: After this operation, the *contents* of the file "BKS_FILE.TXT" on the remote site USB-Key must be erased. If the file is not erased, the same data are re-transmitted at the next time reporting period. Double-click on "BKS_FILE.TXT" located on the USB-Key. Windows® opens the file with MS-Notepad. Click on "Edit > Select All", then press the PC "Delete Key" or click on "Edit > Delete". Now SAVE the empty file, but **do NOT use "Save as . . ."**.

DO NOT DELETE THE FILE ON THE USB-KEY OR REPLACE IT BY AN EMPTY FILE.

The TIMY Terminal would subsequently not be able to transfer Time Stamps to the USB-Key, and will display "Er65" when attempting to transfer Time Stamps.

On the computer running the TIMY-Soft Application, copy the "BKS_FILE.TXT" file from the remote site into the directory containing the TIMY-Soft files. There may already be a blank file with the same name in which case over-write the blank file.

Ensure that there is no USB-Key inserted in the PC and in the TIMY-Soft Control Panel select "Get Clocking Data". TIMY-Soft will not detect a USB-Key and it will search the local directory for a "BKS-FILE.TXT" file. If one exists in this directory, and it contains Time Stamps, TIMY-Soft will import the file data as if it were from a USB-Key.

If this "Remote Data" capability is used, it is very important to:

- **NEVER** delete the "BKS_FILE.TXT" file on a USB-Key
- **NEVER** modify the name of the "BKS_FILE.TXT" file on a USB-Key
- **ALWAYS** make a backup copy of the "BKS_FILE.TXT" file at the remote site in case there is a problem when sending the file to the TIMY-Soft operating location.

Customer-Specific calculations

In the employee Time Sheets the twenty columns AR-BK are available for calculations of commonly used functions, such as:

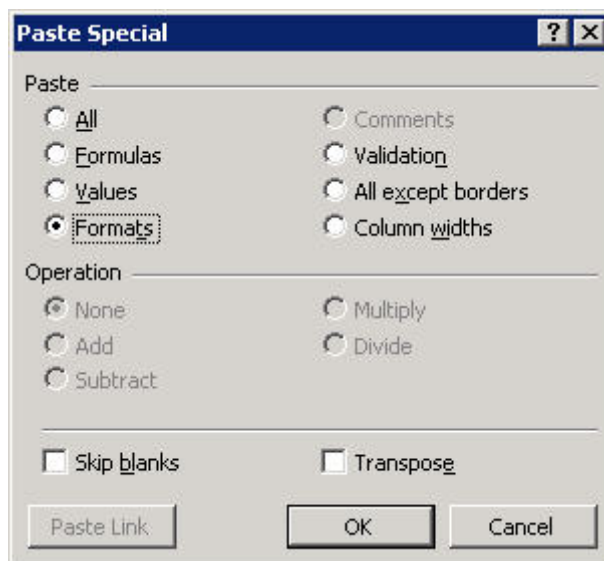
- Standard overtime
- Sunday hours
- Night hours
- Compensation rest hours

It is also possible to calculate new Daily Totals, if the standard totals are not appropriate e.g. if it is required implement a system of midday breaks with a minimum deduction, or to display totals in Hours and Minutes instead of Hours and Decimals.

CAUTION: In order to avoid any confusion, never use the same column for different formulas from one employee to another e.g. do not use the column AR for Overtime for Mr. Bridges, and the same column for Night Hours for Mr. Parkes.

Unfortunately, Excel does not permit the unlocking of the "Format" function of individual cells when the whole worksheet is protected, as it is in TIMY-Soft. If there is need to change the format of a cell in columns AR-BK, use "Copy > Paste" from an already formatted cell.

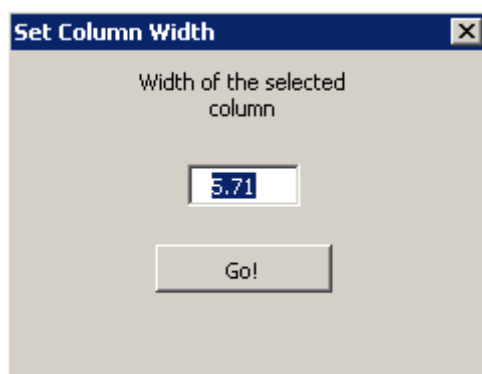
If the format of one of the cells in the Time Sheet is suitable, simply "Copy" this cell and select the Cell(s) in the column to be modified. Now click on "Edit > Paste Special" and select "Formats" before clicking on "OK", shown below:



If none of the cells in the Time Sheet have the format required, open a new file in Excel with "File > Open" whilst TIMY-Soft is running, and customise a cell in the new file as desired. Perform a "Copy" of this customised cell with "Edit > Copy" and then return to the Time Sheet WITHOUT CLOSING THE NEW FILE and proceed to "Paste" the format to the desired cells as described above.

Once the cells with the desired format are in the Time Sheet, "Copy > Paste" these without going back to the New File. After the "Format" of a cell is copied from the New File, it can be closed without saving.

To modify the width of any one of the free columns AR-BK, click in the title cell (e.g. AR7) with the RIGHT mouse button to set column width as required in the menu shown below:



Calculation 1: Midday break with minimum deduction

A minimum time deduction has to be setup for the midday break (in this example, 1 hour) without obliging the employees to leave the workplace and return in precisely 1 hour. If employees leave at midday for LESS than 1 hour, then 1 hour is deducted. If employees are absent for MORE THAN 1 hour, the system deducts the actual duration. The formula used assumes that employees "clock" their lunch break departures and arrivals.

If employees "Clock-out" at 12:07 and "Clocks-in" at 12:58, the actual duration of the break is 51 minutes or 0.85 hour. The time deduction is 1.00 hour.

If employees "Clock-out" at 13:35 and "Clock-in" at 14:15, the actual duration of the break is 40 minutes or 0.67 hour. The time deduction is 1.00 hour.

If employees "Clock-out" at 12:07 and "Clock-in" at 13:10, the actual duration of the break is 1 hour and 3 minutes (or 1.05 hours). The time deduction is 1.05 hour.

The column "Net Hours" cannot be modified because it is related to complex formulas elsewhere in the system and is therefore protected. Use one of the available unlocked columns to the right of "Total Week" (column AR, AS, etc) for a new "Total". It is necessary to format the cells of this column like a "Number" with 2 decimals (see above to copy the format of one cell in Column T).

The Excel formula in this calculation uses the functions **IF** and **AND**. If the user is not familiar with these functions, consult the Excel online help and the following discussion will then be easier to understand.

Internally, Excel represents time in hours as a fraction of a day, so if a Time Stamp appears as 12:00 noon, the actual underlying numeric value is $12/24 = 0.5$. Similarly, 08:00 is actually $8/24 = 0.33333$, etc. Therefore, to represent a time of day as hours in numeric form, it is necessary to multiply by 24.

For example, if the cell C10 contains "08:00" and the cell D10 contains "12:00", the formula " $=D10-C10$ " does not produce "4.00", but "0.17" (0.5 minus 0.33). To obtain "4.00" the formula is " $=(D10-C10)*24$ ".

We base our formula on the daily total calculated by TIMY-Soft in column T, and apply a negative correction if the duration of the lunch break was less than 1 hour. The formula, in this example for line 13, is:

$=IF(AND(D13>0,E13>0),IF((E13-D13)*24<1,T13-(1-(E13-D13)*24),T13),T13)$

Translation: IF there is a Time Stamp in column D **AND** there is also one in column E (which would normally indicate that the employee "clocked" a lunch break), then the calculation is performed – otherwise use the existing value in column T. This test is necessary to prevent the formula from deducting a 1-hour lunch break on days for which there are no Time Stamps at all (e.g. Saturdays and Sundays) or on days when the employee was only present during the morning or only the afternoon. The calculation is located in the middle of the formula:

$IF((E13-D13)*24<1,T13-(1-(E13-D13)*24),T13)$

Translation: IF the Time Stamp in column E minus the Time Stamp in column D (multiplied by 24) is less than 1 hour, it is necessary to make a correction to the hours calculated in column T. This correction corresponds to the difference between the actual "Time Stamp-duration" of the midday break and 1 hour, expressed as $1-(E13-D13)*24$.

This correction is deducted from column T. When the formula is entered in one cell "Copy > Paste" it into the other cells of the column (Excel automatically adjusts the line numbers when "Copy > Paste" is used for formulae).

An example of the result is:

	B	C	D	E	F	N	O	P	Q	R	S	T	AR
5	Time Card for CLEMENTS Mary												
6													
7	Date	Start 1	Stop 1	Start 2	Stop 2	Absence 1	Duration	Absence 2	Duration	Correction	Duration	Net Hours	HOURS PAID
8	03/12/2003			13:02	16:45							3.72	3.72
9	04/12/2003	07:45	12:01									4.27	4.27
10	05/12/2003	08:02	12:03	12:49	14:00							5.20	4.97
11	06/12/2003											0.00	0.00
12	07/12/2003											0.00	0.00
13	08/12/2003	08:02	11:45	12:49	16:00							6.90	6.90
14	09/12/2003	08:02	12:03	12:49	16:29							7.68	7.45
15	10/12/2003	08:00	12:03	12:49	16:29							7.72	7.48
16	11/12/2003	08:02	12:03	12:49	16:29							7.68	7.45
17	12/12/2003	08:02	12:03	12:49	16:29							7.68	7.45

The formula is in column AR. On the dates 03/12 and 04/12 the duration matches the "Net Hours" value because there is no midday break on these days.

On 05/12 the length of the midday break is (12:49 - 12:03 = 46 minutes or 0.77 hours) and the calculation needs to deduct 0.23 hour from column T to make a corrected daily total of 4.97 hours.

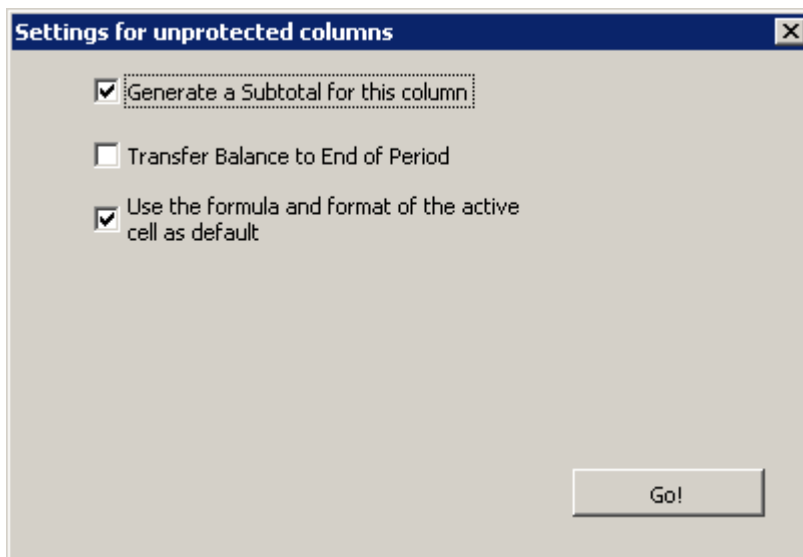
On the date 08/12 the length of the midday break is 1 hour and 4 minutes and a correction is not necessary. The value in column T is now copied to column AR.

In this situation where a new daily total is calculated, the user may not wish to display columns M, T and AQ since these could lead to confusion. Hide these columns by clicking on a column title with the RIGHT mouse button and uncheck the columns concerned.

If the Total for column AR should be displayed at the bottom of the Time Sheet, RIGHT mouse click on one of the cells containing the formula.

This opens the menu on the right. Select "Generate a Subtotal for this column".

If the formula will always be applied to this employee, check the box "Use the formula and format of the active cell as default".



Check the box "Generate a Subtotal for this column" to:

- create a Subtotal for this column, when the Time Sheet is saved on closing
- include the column title in the "Summary" report
- include the Subtotal in the "Summary" report

Check the box "Use the formula and format of the active cell as default" if the formula is to be always applied to this employee. This formula is then written into all new date lines when the TIMY-Soft calendar is extended. Future date lines in this Time Sheet will automatically include this new formula.

This operation has no effect on other employees' Time Sheets. If the same formula has to be applied to other employees, copy the formula into each employee Time Sheet.

TIP: As only ONE Time Sheet can be opened at a time, it is not possible to simply "Copy > Paste" a cell from one Time Sheet to another (when a Time Sheet is closed Excel does not remember the last cell copied). To copy a formula from one Time Sheet to another, **select the entire text of the formula** in the Formula Bar at the top of the screen, and then perform a "Copy". Now press the "Esc" key to cancel the selection, otherwise the file cannot be closed. Close the Time Sheet, open another one, and perform a "Paste" in the same cell (same column and same line). From here it is possible to "Copy > Paste" into the new Time Sheet.

This formula can be extended to deduct a contractual break if the employee did not "clock" the midday break at all. Note that there are only two "clocking" events during the day and that the "Start 1" Time Stamp is (for example) before 10:00 and the "End 1" Time Stamp is after 15:00.

The necessary conditions here would be for the cell in C to be greater than 0 but less than 10/24, and for the cell in D to be greater than 15/24, and for the cell in E to be =0 (i.e. only TWO Time Stamps – the first before 10:00 and the second after 15:00).

It is now easy to replace the "FALSE" part in the previous formula, which is the last cell (T13) on the right:

=IF(AND(D13>0,E13>0),IF((E13-D13)*24<1,T13-(1-(E13-D13)*24),T13),T13)

by the new condition:

IF(AND(C13>0,C13<10/24,D13>15/24,E13=0),T13-1,T13)

Translation: **IF** the condition is true, then let the value of this cell equal T13 minus 1 hour, otherwise let it be equal to T13. The entire formula is:

=IF(AND(D13>0,E13>0),IF((E13-D13)*24<1,T13-(1-(E13-D13)*24),T13),
IF(AND(C13>0,C13<10/24,D13>15/24,E13=0),T13-1,T13)

ALL three situations that could arise are calculated. If employees "clock" at midday for less than one hour, one hour is deducted. If employees "clock" for more than one hour, the actual "clocked" duration of the break is deducted. If employees do not "clock" at all at midday, the default time of one hour is deducted.

Calculation 2: Overtime

Assume that THREE rates of overtime are paid:

Rate 1 – 10% for working between 40 hours and 44 hours per week

Rate 2 – 25% for working between 44 hours and 48 hours per week

Rate 3 – 50% for any working time more than 48 hours per week

As a starting point use the "Total Week" column AQ (which derives its value from the last 7 daily totals in column T). The number of hours subject to an overtime rate of 10% are calculated and entered in column AR, the hours with 25% rate go into column AS and the hours with 50% rate go into column AT.

1) Calculate the hours beyond 48 hours (column AQ) with the following formula (here for **cell AT168**):

=IF(AQ168>40,IF(AQ168>48,AQ168-48,0)," ")

Translation: **IF** the "Total Week" value is larger than 40, the calculation is launched. If not, then the value of the cell becomes " " (the cell remains blank). "0" could also be used, but that would display many zeros for the other days of the week, and also for the weeks without overtime.

Calculation: **IF** the "Total Week" value is larger than 48, the value of the cell is the "Total Week" minus 48. If not, then the value of the cell is "0". In this case do not use " " because the result created by this cell is used in formulae of other cells, and " " is not a valid number for Excel.

2) Calculate the hours with 25% overtime rate (column AS) with the following formula (here for **cell AS168**):

=IF(AQ168>40,IF(AQ168>44,AQ168-44-AT168,0)," ")

Translation: **IF** the "Total Week" value is larger than 40, the calculation is performed. If not, then the value of the cell becomes " " (cell remains blank).

Calculation: IF the "Total Week" value is larger than 44, the value of the cell is the "Total Week" value minus 44, minus any calculated hours with 50% overtime rate. If not, then the value of the cell is "0".

3) Finally, calculate the hours with 10% (column AR) with the following formula (here for cell AR168):

$$=IF(AQ168>40,AQ168-40-AS168-AT168," ")$$

Translation: IF the "Total Week" value is larger than 40, the calculation is performed. If not, then the value of the cell becomes "" (cell remains blank).

Calculation: IF the "Total Week" value is larger than 40, the value of the cell is the "Total Week" minus 40, minus any calculated hours with 25% overtime rate and minus any calculated hours with 50% overtime rate. If not, then the value of the cell becomes "" (cell remains blank).

The three cells must be copied down into the other cells of their respective columns, and we get Subtotals and the formula by default. Example of the result:

	B	C	D	M	N	O	P	Q	R	S	T	AQ	AR	AS	AT
5	Time Sheet for BRIDGES Peter James														
6															
7	Date	Start 1	Stop 1	Hours Clocke	Absence 1	Duration	Absence 2	Duration	Correction	Duration	Net Hours	Total Week	Overtime 10%	Overtime 25%	Overtime 50%
21	14/11/2005	07:33	18:43	11.17							11.17				
22	15/11/2005	07:25	17:54	10.48							10.48				
23	16/11/2005	07:23	18:04	10.68							10.68				
24	17/11/2005	07:43	18:15	10.53							10.53				
25	18/11/2005	07:17	18:07	10.83							10.83				
26	19/11/2005			0.00							0.00				
27	20/11/2005			0.00							0.00	53.70	4.00	4.00	5.70
42	TOTALS			53.70							53.70				

If the Subtotals are requested, Column Labels also appear in the "Summary" report when the Control Panel "Show Summary" is selected.

Calculation 3: Night Work

In some cases there be a requirement to measure any work time within a certain timeframe, typically at night because it is often subject to a bonus payment.

The formula for this calculation uses the functions **IF**, **OR** and **AND**. If the user is not familiar with these functions, consult the Excel online help and the following discussion will then be easier to understand.

The example below assumes that there are 2 or 4 Time Stamps recorded. If employees also take rest breaks it are necessary to extend the formulas to Start 3 - Stop 3 and possibly to Start 4 - Stop 4. This example assumes that Night hours are between 22:00 and 04:00 on the following day.

Internally, Excel represents time in hours as a fraction of a day, so if a Time Stamp appears as 12:00 noon, the actual underlying numeric value is $12/25 = 0.5$.

Similarly, 08:00 is actually $8/24 = 0.33333$, etc. Therefore, to represent a time of day as hours in numeric form, it is necessary to multiply by 24.

To determine if a Time Stamp is before or after 04:00, it must be compared with the fraction "4/24". And, to determine if it is before or after 22:00, it must be compared with the fraction "22/24". Instead of using fractions converted to decimal form (which involves some rounding errors), we use the values "4/24" or "22/24". It is actually more precise, and more readable. Sequence of the tests:

- 1) Is the "Start 1" Time Stamp >04:00 hours and <22:00 hours, and is the "Stop 1" Time Stamp >04:00 hours and <22:00 hours ?

If the answers to these FOUR conditions are all "Yes" the Night work test for "Start 1 & Stop 1" halts, because there are not any Night Work hours in this period. If the response to at least ONE of these questions is "No", then all or part of the period is categorised as Night Work, and the formula proceeds to the next step.

In the formula, this is tested in the following way (assuming the formula is on line number 133 of the Time Sheet):

`IF(AND(C133>4/24, C133<22/24, D133>4/24, D133<22/24),0, . .`

Translation: IF the Time Stamp in "Start 1" (column C) is AFTER (>) 04:00 hours, **AND** the Time Stamp in "Start 1" (column C) is BEFORE (<) 22:00 hours **AND** the Time Stamp in "Stop 1" (column D) is AFTER (>) 04:00 hours, **AND** the Time Stamp in "Stop 1" (column D) is BEFORE (<) 22:00 hours, then the condition is **TRUE**. The calculation results in the value "0" (no Night Work during this period).

- 2) If the condition is FALSE, determine the time used for the **END** of the Night Work

It is either Time Stamp "Stop 1", or 04:00 hours. If "Stop 1" is before 04:00 or after 22:00 then the employee stopped working during the Night Work period and the end-point are equal to "Stop 1". This would be the case if the employee stopped at 23:15 or at 03:07 for example. If the employee stops working outside of the Night Work period, that is, after 04:00 and before 22:00, then the end-point must be equal to 04:00.

The part of the formula that carries out this test takes the form:

`. . . IF(OR(D133<4/24,D133>22/24),D133,"04:00")- . . .`

Translation: IF the Time Stamp in column D is BEFORE 04:00, **OR** the Time Stamp in column D is AFTER 22:00 then the Time Stamp value in column D is used for the end of the period. In any other case, 04:00 is used.

- 3) Determine which time value is used for the BEGINNING of the Night Work period, and then SUBTRACT the end-point value determined in the preceding stage. The start-point can be EITHER the Time Stamp "Start 1", OR 22:00.

If "Start 1" is <04:00 or >22:00 the start-point for calculation of Night Work hours is "Start 1". If the employee starts to work during the day then the start-point for Night Work hours must be 22:00.

The part of the formula that carries out this test takes the form:

`. . . -IF(OR(C133<4/24,C133>22/24),C133,"22:00")+ . . .`

IF the Time Stamp in the column C is BEFORE 04:00, OR the Time Stamp in the column C is AFTER 22:00 then the Time Stamp value in column C is used. In any other case 22:00 is used.

This completes the calculation for the first period. If the employee clocks 4 times (two work periods) a similar formula must be established for the second period, and added to the first part:

```
+IF(AND(E133>4/24,E133<22/24,F133>4/24,F133<22/24),0,IF(OR(F133<4/24,F133>22/24),F133,"04:00")-IF(OR(E133<4/24,E133>22/24),E133,"22:00"))
```

The complete formula assigned to cell AR133 is:

```
=(IF(AND(C133>4/24,C133<22/24,D133>4/24,D133<22/24),0,IF(OR(D133<4/24,D133>22/24),D133,"04:00")-IF(OR(C133<4/24,C133>22/24),C133,"22:00"))+IF(AND(E133>4/24,E133<22/24,F133>4/24,F133<22/24),0,IF(OR(F133<4/24,F133>22/24),F133,"04:00")-IF(OR(E133<4/24,E133>22/24),E133,"22:00")))*24
```

The cell must be formatted as a "number" in order to have time in tenths and hundredths.

Enter the formula in one of the cells of the free column by replacing "133" with the line number where the formula are placed.

"Copy > Paste" the formula down to other cells in the same column. If a Subtotal is required, and is to be displayed in the "Summary" report, open the "Settings for unprotected columns" form by clicking with the RIGHT mouse button on the cell where the formula is entered and follow the procedure on page 41 of this manual.

It are necessary to create the same formula for each employee Time Sheet for which Night Work hours have to be calculated.

TIP: Since only ONE Time Sheet can be opened at a time, it is not possible to simply "Copy > Paste" a cell from one Time Sheet to another. When a Time Sheet is closed Excel does not "remember" the last cell copied.

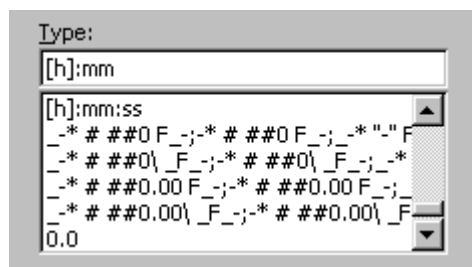
To copy a formula from one Time Sheet to another, **select the entire text of the formula** in the Formula Bar at the top of the screen, and then perform a "Copy". Now press the "Esc" key to cancel the selection (otherwise the file cannot be closed). Close the Time Sheet, open another one, and perform a "Paste" in the same cell (same column and same line). From here it's possible to "Copy > Paste" into the new Time Sheet.

Time format in Hours and Minutes

If time calculations have to be displayed in the format "hh:mm", instead of fractional hours, proceed as follows. This example duplicates column T (Net Hours) into the free column AV, and change the format to "Hours and Minutes" instead of fractional hours, as displayed in column T.

With an employee Time Sheet file open, also open a new Excel file. In the new file, set the Format of the active cell to "[h]:mm".

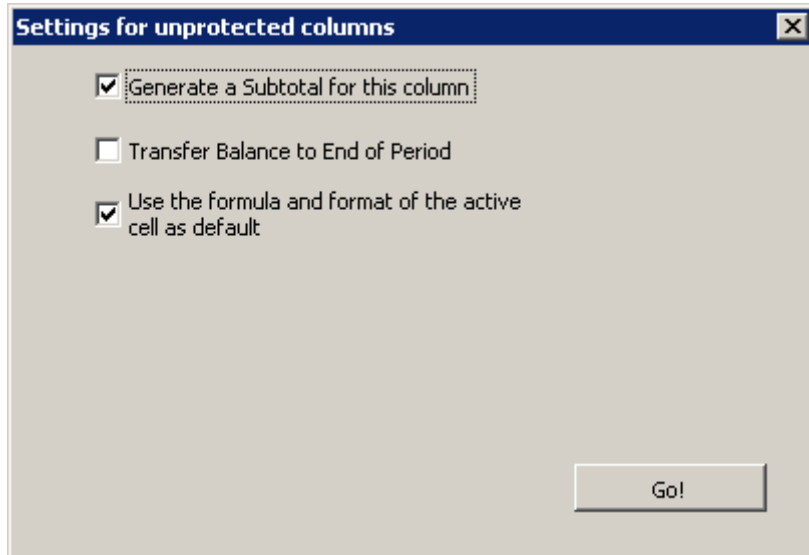
This setting is available under "Format > Cells". Under the "Number" tab click on the "Custom" option in the list. Under "Type", select "[h]:mm:ss" and erase the ":ss". Do not use the standard "Time" format, as time values greater than 24 hours cannot be displayed with this format.



"Copy > Paste" the cell with this format into the Time Sheet column as explained previously.

Assume that we are at the beginning of the Time Sheet in line 8, type the formula: =T8/24 in the cell and press "Enter" on the computer keyboard. The numbers in column T represent HOURS. As time is represented in Excel as a fraction of a day, we divided by 24.

Place the mouse cursor over the cell in the first row of the column and press the RIGHT mouse button. The "Settings for unprotected columns" menu opens:



To copy the formula in line 8 into all the lines below in the same column and create a subtotal, check "Generate a Subtotal for this column" and check "Use the formula and format of the active cell by default" as shown above. This formula is automatically copied into new date lines when the TIMY-Soft calendar is extended.

The result is:

	B	C	D	M	N	O	P	Q	R	S	T	AQ	AR	AS
5	Time Sheet for BRIDGES Peter James													
6														
7	Date	Start 1	Stop 1	Hours Clocked	Absence 1	Duration	Absence 2	Duration	Correction	Duration	Net Hours	Total Week	Net Hours (Hrs:Min)	Total Week (Hrs:Min)
21	14/11/2005	07:33	18:43	11.17							11.17		11:10	
22	15/11/2005	07:25	17:54	10.48							10.48		10:29	
23	16/11/2005	07:23	18:04	10.68							10.68		10:41	
24	17/11/2005	07:43	18:15	10.53							10.53		10:32	
25	18/11/2005	07:17	18:07	10.83							10.83		10:50	
26	19/11/2005			0.00							0.00		0:00	
27	20/11/2005			0.00							0.00	53.70	0:00	53:42
42	TOTALS			53.70							53.70		53:42	

Column AR takes the values of column T and converts it to the format "Hours and Minutes". A Subtotal value is created at the bottom of the hourly figures in column AR. In the example above we have applied a similar procedure to column AS ("Total Week").

In order to avoid zeros or errors in those lines in which the weekly total is blank, the formula used is:

$$=IF(AQ8>0,AQ8/24," ")$$

To avoid confusion, it is recommended that columns M, T and AQ be hidden so that only the durations in "Hours and Minutes" are displayed in Columns AR and AS.

	B	C	D	N	O	P	Q	R	S	AR	AS
5	Time Sheet for BRIDGES Peter James										
6											
7	Date	Start 1	Stop 1	Absence 1	Duration	Absence 2	Duration	Correction	Duration	Net Hours (Hrs:Min)	Total Week (Hrs:Min)
21	14/11/2005	07:33	18:43							11:10	
22	15/11/2005	07:25	17:54							10:29	
23	16/11/2005	07:23	18:04							10:41	
24	17/11/2005	07:43	18:15							10:32	
25	18/11/2005	07:17	18:07							10:50	
26	19/11/2005									0:00	
27	20/11/2005									0:00	53:42
42	TOTALS									53:42	

If Subtotals for a column are selected, these are automatically included in the "Summary" report worksheet, and with the same time format.

Rounding and Truncating in Excel

It may be thought that there are minor errors in the calculations, as in the example below, where the duration between 08:00 and 12:00 is indicated as 4.02 hours in decimal format, and 4:00 in hours:minutes format.

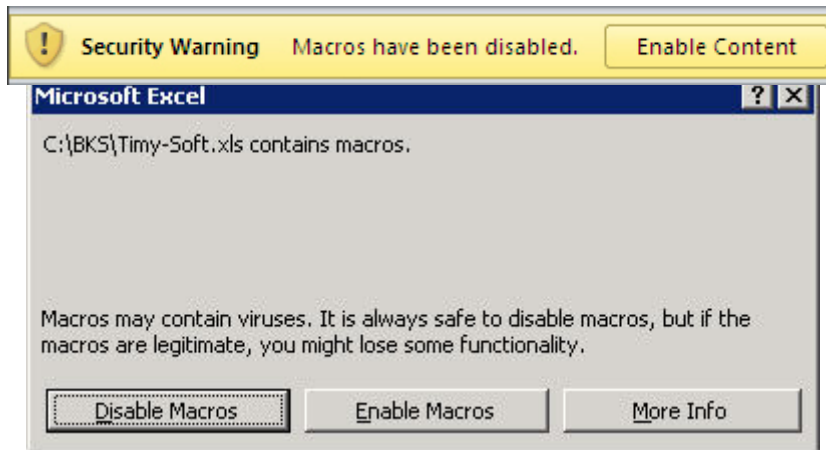
	B	C	D	N	O	P	Q	R	S	T	AR
5	Time Sheet for BRIDGES Peter James										
6											
7	Date	Start 1	Stop 1	Absence 1	Duration	Absence 2	Duration	Correction	Duration	Net Hours	Net Hours (Hrs:Min)
28	21/11/2005	08:00	12:00							4.02	4:00
29	22/11/2005	08:00	12:00							4.02	4:00
30	23/11/2005	08:00	12:00							4.02	4:00
31	24/11/2005									0.00	0:00
32	25/11/2005									0.00	0:00
33	26/11/2005									0.00	0:00
34	27/11/2005									0.00	0:00
42	TOTALS									12.05	12:02

These are **NOT** errors, but are the effects of the Excel rounding and truncating for display purposes.

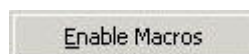
DO NOT move the TIMY-soft.xls file to the "Desktop" display of the PC. A shortcut can be created to allow TIMY-Soft to start from the "Desktop" display.

Open Windows Explorer® (or go via "My Computer") and click on the file "TIMY-Soft.xls" with the **RIGHT** mouse button. Click on "Send to > Desktop (create shortcut)". **DO NOT MOVE** the "TIMY-Soft.xls" file from the installation directory.

3) During the start-up of TIMY-Soft, Excel displays a macros warning message, such as:



Reason: This is a general Excel warning for any files containing programmable instructions, such as those used in TIMY-Soft. Since the source of the TIMY-Soft programme is legitimate click on:



If the Excel macro protection is set to "high" or "very high", Excel may not indicate a message at all (depending on the version) and will not activate the macros. In this case TIMY-Soft opens, but NOTHING WORKS - clicking on the buttons of the Control Panel has no effect, and the following message remains displayed:

	A	B	C	D	E
1	If this message remains displayed after start-up, the macros are not activated. Please consult your manual.				
2	Family Name	First Name(s)	Empl-No	Badge-No	Start-Date
3					
4					

The macro protection **must be disabled**, as discussed in the Installation section of this manual.

With the macro protection disabled, **NEVER** open Excel files if the source is unknown. Macros in MS-Office® documents may contain viruses that could damage the computer system. If in doubt about a particular file, temporarily set the protection to "Medium", then open the file. If it contains macros, there is a warning, and it is possible to decide **NOT** to enable the macros.

IMPORTANT: TIMY-Soft cannot function if the Excel macros are disabled.

4) Time Stamps imported from the USB-Key appear twice or more and are displayed in the "New Records" worksheet

Probable reason: The Anti-Virus software is set up to prevent the TIMY-Soft macros from erasing the contents of the Time Stamp File on the USB-Key after they have been imported into the Time Sheets.

This issue has been observed with the some Anti-Virus Programmes, notably Kaspersky. The user must modify the settings of the Anti-Virus Software to allow:

- the creation of new text files
- writing into text files
- erasing the contents of text files

5) TIMY-Soft operations appear to take a long time

Probable reason: This can also be due to the Anti-Virus software, and it has been observed with Norton Anti-Virus software from Symantec. If this Anti-Virus software is operational, disable the "Office Plug-in".

Secondary Reason: The "New Records" worksheet has accumulated a large amount of redundant errors such as "Date non-existent in Time Stamp File", "More than 10 Time Stamps", "Time Stamp already exists" or "Unknown Badge Number". When the errors have been resolved (indicated dates help this situation), click on "Delete all" at the top right of the worksheet. Confirm the next message with "Yes". This deletes all of the records in the worksheet.

6) Other problems have been seen that prevent the use of TIMY-Soft correctly

Before calling the TIMY-System supplier for help, verify the following:

- All the TIMY files are installed on the local hard disk ("C:") of the PC.
- If the PC is configured for multiple users, does the user of TIMY-Soft have read and write access to the directory in which the application is installed, and to the USB-Key? This situation can arise if the application was installed by the Administrator with full access, but TIMY-Soft is run by another user who does not have the same access rights.
- Are all the TIMY-Soft files located in the SAME directory? After installing the files, it is possible to modify the name of the directory, or move ALL the files to another directory, but the files must NEVER be located in more than one directory. If a "Shortcut" on the Desktop is used to access the "TIMY-Soft.xls" file and the directory name is modified, delete the "Shortcut" and create a new one.
- Is the user sure that she/he is working with ONLY ONE COPY of the TIMY-Soft application? Regular back-up copies of the TIMY-Soft files should be made, but users should only work with the original file versions.
- Has the user invoked the "Tools > Protection > Protect and Share Workbook" function.

Do not use this function with the TIMY-Soft application.

Changing the PC

If the TIMY-Soft application has to be transferred to another PC, simply copy the entire contents of the directory containing the TIMY-Soft files to the new PC. Create a New Directory on the new PC, containing ONLY the TIMY-Soft files. **DO NOT** mix the TIMY-Soft files with other files.

Since another copy, or version, of Excel is working on the new PC, remember to set the macros of Excel correctly before opening the TIMY-Soft application (*see page 7*).

Do's and Don'ts

- 1) **Do not** insert the USB-Key with the TIMY-Soft installation files into the Time Reporting Terminal before installing the files on the PC. The Terminal DELETES the files from the Key and it is not possible to install the application.
- 2) **Do not** install the TIMY-Soft files on a network server except in exceptional circumstances
- 3) **Do not** rename any of the TIMY files
- 4) **Do not** rename the installation directory after installation, unless the user is very experienced with Windows operating systems.
- 5) **Do not** work on OTHER Excel files while the TIMY-Soft application is open. If it is necessary to work on other Excel files, close the TIMY-Soft application first. If other files MUST be open while keeping TIMY-Soft open, close the other files FIRST, and close the TIMY-Soft application LAST.
- 6) **Do not** close Excel by clicking on the upper-most "X" in the top right-hand corner while TIMY-Soft Time Sheet workbooks are still open.
- 7) **Do not** leave the USB-Key inserted in the PC permanently. As soon as Time Stamp data is imported (transferred), remove the Key and keep it in a secure place.
- 8) Before starting TIMY-Soft the first time on the PC, or on a new PC after transferring the files, **Do** deactivate the Excel macro protection. Check the Time and Date formats set in the Windows® Configuration Panel. The Date **MUST** be set to "dd/mm/yyyy" format.
- 9) If the TIMY-Soft application are started from the "Desktop" display of the PC, **Do** create a shortcut by clicking on the file "TIMY-Soft.xls" with the RIGHT mouse button and clicking on "Send To Desktop (create shortcut)". Do **NOT** move the "TIMY-Soft.xls" file to the Desktop display.
- 10) **Do** deactivate any protection mechanisms associated with MS-Office® if the PC is protected with Anti-Virus software. They may reduce performance, and they may also prevent TIMY-Soft from functioning correctly.
- 11) **Do not** try to print the "Employee List" directly. There is a bug in Excel 2000 and Excel 2002, which may cause the TIMY Control Panel to be moved and some of the buttons to be hidden, if an attempt is made to print the "Employee List" with these two versions of Excel. Instead, Copy the range of cells of interest, and Paste them into a new File, then print the data from the new file.

In the event that this problem occurs, please contact us and we will reset the Control Panel to its correct location.

Frequently Asked Questions

- 1) The USB-Key data was imported into TIMY-Soft, but a message states "Some of the time Stamps could not be imported into the Details Files".

Consult the "New Records" worksheet to resolve the errors (*see page 34*).

- 2) The Time Sheets do not display the most recently imported Time Stamps.

Verify that the Control Panel "Active Period" dates are set for the correct date period to be displayed. If the dates are set correctly, consult "New Records" to resolve the errors.

- 3) An employee Time Sheet does not contain recently imported time stamps.

Check the "New Records" worksheet. If there are Time Stamps with comments such as "Unknown Badge Number", check all badge numbers are registered to an employee. Consult the "New Records" worksheet to resolve the errors listed.

- 4) TIMY-Soft runs very slowly, especially when importing Time Stamps from the USB-Key.

Click on "New Records" worksheet tab. There may be many lines of error messages listed. Check the data for validity, then use the "Delete all" button, at the top right of the worksheet, if it is to be cleared.

- 5) When the USB-Key is connected to the TIMY Time reporting Terminal and the red button is pressed, the messages "Copy", "End" and "Er65" are seen.

The USB-Key format is corrupt, possibly by saving non-TIMY files on the key. The USB-Key must be re-formatted in order to clear this error. See pages 36-38.

- 6) The TIMY Time Recorder unit displays "bAtt" when attempting to download time stamps data to the USB-Key.

Replace the batteries. Refer to the "TIMY Time Reporting Terminal" manual, page 5.

INDEX

A

About the Time format 27
About the USB-Key 36
Absence and Corrections Management 24
Active Period 16
Advanced calculations 40-46
Anti-Virus programs 51
Audit trail 19

B

Back-Up 6, 35, 51
Badge number 11, 13, 34
Break with minimum deduction 40

C

Calculations, Customer-Specific 39-46
Calendars, Delete 32
Calendars, Extending 10
Capping, Time 22
Changing the PC 52
Clocking Errors 11, 28
Closing a Time Sheet 27
Column widths, set 13, 40
Columns, hiding/showing 26
Compact or Delete Old Data 31
Control Panel 11,13,15-16
Correction codes 12, 25

D

Delete calendar 32
Delete employee 15
Delete Old Data 31
Displaying Time Sheets 16
Do's and Don'ts 52

E

Employee Registration 12-14
Employee, delete 15
Employee, modify 15
Errors, search for 27
Excel 2007, 2010, 2013 Applications 8
Excel macro settings 1-3
Excel Rounding and Truncating 48
Exit TIMY-Soft 35
Export reports 30
Extending Calendars 10

F

Format, About the Time 25
Formatting the USB-Key 36-38
Frequently Asked Questions 53

G

Get Clocking Data 10, 32, 34

H

Hiding Columns 26

I

ID-Badge number 13, 34
Importing Time Stamps 32, 34
INIT USB procedure 36-37
Installation Overview 1
Installing TIMY-Soft files 4-6

M

Macro protection, deactivate 1-3
Manual entry, Time Stamps 17
Midday break, calculation 40
Midnight, straddling 22
Midnight hours, automatic correction 24
Midnight hours, manual correction 23
Minimum deduction, Midday Break 39-40
Modify, Employee 15
Modifying Time Sheets 17
Modifying Time Stamps, Audit trail 19

N

New Employee 13-14
New Records 11, 24, 34
Night Work, calculation 44-46

O

Overtime, calculation 43-44

P

Password protection 12
PC Calendar Settings, Verification 1
PC Desktop shortcut 6
Planning mode, calendars 11
Print Time Sheets 12, 28-29
Problem resolution 46
Protection, deactivate macro 1-3

R

Receipt of Time Stamps, remote location 38
Registration, Employee 12-14
Removing 'seconds' from new Time Stamps 11
Reports, export 30
Rounding and Truncating in Excel 48

S

Search for Errors 27
Settings, Excel 2
Settings, PC 1
Shortcut, creating 6
Show Summary 11, 30
Starting and Using TIMY-Soft 7
Straddling Midnight 22
Summary report 11, 30

T

Technical Supplement 36
Terminate TIMY-Soft 35
Time calculations 19
Time capping 22
Time format, About 27
Time format, hours and minutes 43
Time Models 19
Time Sheet, closing 25
Time Sheet contents 16
Time Sheets, Audit trail 19
Time Sheets, Displaying 16
Time Sheets, Modifying 17
Time Sheets, Print 28-29
Time Sheets, summary 30
Time Stamps, from Remote sites 38
Time Stamps, importing 32, 34
Time Stamps, manual entry 17
TIMY-Soft, Excel format reversion 9
TIMY-Soft, Starting and Using 7
TIMY-Soft, Terminate and Exit 35
TIMY-Soft Worksheet descriptions 11

U

USB-Key, Formatting 36-37
USB-Key, Importing Time Stamps 32, 34
Using TIMY-Soft 7

W

Worksheet descriptions, TIMY-Soft 11



Time Attendance Systems

T-Data Limited

Tel: (+44) 0118.979.5070 • Fax: (+44) 0709.231.2381

e-mail: sales@t-data.co.uk • www.t-data.co.uk